

**BATTLEFIELD**



**T H E  
Rental  
S T O R E.**



## **Rental & Supply Catalogue**

### **Battlefield Equipment Rentals**

**1-800-RENT-CAT**  
**BattlefieldEquipment.ca**

# WHY RENT

## FROM BATTLEFIELD EQUIPMENT RENTALS

### **Minimize Costly Breakdowns**

Our fleets are loaded with newer, reliable equipment that is put through a rigorous maintenance routine by trained mechanics prior to each rental to ensure the most productive and reliable equipment possible reaches your job site.

### **Complete Your Job More Efficiently**

Expect the latest technology from Battlefield Equipment Rentals. We rent Caterpillar and other top quality brands of equipment utilizing the most innovative ideas available today. You will be using the right equipment to get the job done right. No more “just getting by” with the wrong equipment.

### **No Equipment Obsolescence**

Equipment ownership can be costly. The value of equipment depreciates over time. Renting from Battlefield Equipment Rentals allows you to use the latest technology equipment without the concern of costly depreciation. No more trying to get the job done with old, worn-out equipment.

### **No Capital Investment**

Renting frees up your business’ capital. An expense is only incurred for the equipment when it is needed for a particular job. The extra capital you save by renting equipment from Battlefield Equipment Rentals can be applied to the other demands within your business so you can grow profitably. Release your business from the costs associated to equipment ownership.

### **No Maintenance Costs**

Now you can eliminate costly service shops, service tooling, spare parts and those cumbersome maintenance records. We do it all for you. Our rental agreements typically cover complete maintenance of the equipment, so you don’t have to.

### **Eliminate Storage Costs**

No need to maintain a storage yard. Just give us a call for quick pick-up or simply drop off the equipment at the nearest Battlefield Equipment Rentals location when you’ve finished using it. We’ll take care of the equipment storage.

### **Expect Responsive Service**

Our team can knowledgeably consult you on equipment and applications. We will work to become your trusted rental source and make your job easier. We are only a phone call away.

### **Try It Before You Buy It**

You may be considering buying a certain model of equipment and would like to operate it on your job to make sure it suits you before making that potential purchase. What better way to thoroughly try out equipment than to rent a similar machine from the large selection of equipment at Battlefield Equipment Rentals.

### **Supplement Your Core Fleet**

Your job requirements are always changing and you need to stay up with your customers demands. You may not always have the right equipment to complete the job, but we do. Rely on Battlefield Equipment Rentals to quickly supply the equipment you need to get the job done.

### **Bottomline:**

Battlefield Equipment Rentals is fast, easy, cost-effective and there when you need us. Call 1-800-RENT-CAT to discuss your equipment needs with one of our Rental Specialists today.



# TABLE OF CONTENTS

## YOUR SINGLE SOURCE FOR ALL YOUR PROJECT NEEDS

Safety Tips.....	Pg. 4	Flooring Tools.....	Pg. 21
Earth Moving Equipment.....	Pg. 6	Ladders, Scaffolding & NxBurst.....	Pg. 22
Earth Moving, Material Handling & Compaction.....	Pg. 7	Aerial Work Platforms.....	Pg. 23
Light Compaction.....	Pg. 8	Grout & Bonding Agents.....	Pg. 24
Pumps.....	Pg. 9	Environmental Fabrics.....	Pg. 25
Air Compressors & Air Tools.....	Pg. 10	Safety Products & Site Supplies.....	Pg. 26
Generators, Welders, Light Towers & Traffic Control ...	Pg. 11	Value Added Services.....	Pg. 28
Concrete Products.....	Pg. 12	Professional Safety Training Services.....	Pg. 29
Construction Heaters.....	Pg. 14	Rental Fencing.....	Pg. 30
Construction Lasers & Survey Supplies.....	Pg. 15	New Equipment Sales.....	Pg. 33
Landscaping Equipment.....	Pg. 16	Parts & Service.....	Pg. 34
Electric Tools.....	Pg. 18	Rental & Used Equipment.....	Pg. 35
Electric & Construction Tools.....	Pg. 20	Tools & Supplies.....	Pg. 36



# SAFETY TIPS

## FOR CONTRACTORS WHO RENT

No two construction sites are the same. Traffic patterns vary, as do the slopes and grades of the jobsite. Different types of equipment come and go. And of course there can be more than one subcontractor on the job. These variables can make safety a challenge. But that challenge can be met by following simple, yet crucial, safety rules. Your commitment to safety must be consistent. Take steps to make your site - and those around you - safer.

### **Wear seat belts**

Operators of construction equipment are not typically traveling at high speeds, and traffic is limited. Still, there are other working machines - and equipment sometimes needs to use or cross a public road. But seat belts do much more than protect the operator in the event of a collision. They also keep workers inside the cab's rollover protection structure (ROPS). And in many cases, construction equipment is more likely to roll over than be struck by another vehicle. The underfoot conditions can be unstable, and the operator can encounter a berm, ravine or a dropoff from a road to a drainage ditch. Any of these hazards can lead a machine to roll—as can loading and unloading. Staying buckled up keeps you in the ROPS—and keeps you safe.

### **Properly enter and exit machines**

Start by taking the proper approach. Always face the equipment, and use the steps and rails provided by the manufacturer. Make sure contact areas are clear; that steps and handrails are properly secured and free of mud and debris; and that the area is adequately lit. Maintain three points of contact when mounting or dismounting. (Either one hand and two feet, or two hands and one foot, should be on the steps/handrail.) Make sure footwear is clean, and that hands are free of tools or anything else that could encumber the process.

### **Make the shop safe**

Repairing equipment requires caution. Turning off equipment should be obvious. But have you put all safety locks in place? Keep guards and shields on power equipment—they're installed for a reason. Proper ventilation and lighting helps prevent injury. And speaking of lighting ... is the shop properly wired? Using Ground Fault Circuit (GFC) interrupters will help prevent electrical shock. Keep the place clean, too. An organized workshop makes it easy to find the right tools and prevents heavy objects from falling; a clean floor helps you avoid slips and falls. Eye protection is a must.

### **Know where underground lines are buried**

It's easy to do. In fact, you can have utility lines marked at your future jobsite by contacting your local municipality. Potential underground hazards will soon be marked at your future jobsite. And this is a FREE service within most municipalities. Make sure you call before every job - period! The safety of your crew, as well as a hefty fine, is too big of a risk to take.

### **Recognize the hazards**

Start by looking around you. Are there overhead lines or other potential electrical hazards? Are there steep slopes, or space issues? Are employees riding on the outside of moving machines? Many dangers are obvious to those who are open to spotting them. If you see a potential problem, but are not sure, ask. Make hazard recognition second nature by: reviewing safety procedures daily; helping new workers learn what to look for; conducting toolbox talks, participating in other forms of training; and showing a willingness to address the concern. In other words ... be committed; don't leave safety in the hands of someone else. It's your responsibility to take corrective action.

### **Secure loads properly**

Refer to the operator's manual for guidelines on proper loading and transport procedures. Make sure trailers are properly hitched to the towing vehicle. Use safety chains, and make sure signal lights work properly. Inspect tires before each use. If the trailer has brakes, inspect them daily and make sure all connections are intact. Always make sure the brakes are locked before loading. Load and unload on level surfaces. Use tiedowns or chain binders to secure loads to the trailer. Check bindings after you have traveled some distance to be sure the load has not shifted. Load trailers properly - put about 60 percent of the load toward the front. (Too little weight in the front will cause the trailer to fishtail; too much weight will cause the hitch to drag and may raise the front of the towing vehicle, which reduces steering control.) Sweep the decks free of dirt, stones and debris before traveling. Wipe up any oil.

## **Wear the proper clothing**

When it comes to clothing, keep it tight. Loose clothing can get caught in machinery - especially when working around augers or implements. Wear the proper footwear - not only to protect feet from falling objects, but to prevent falls. Construction sites can be slippery places, and boots with good traction are the first line of defense. (Also make sure the boots are high enough to protect your ankles.) Gloves and long pants prevent cuts and scratches that can be uncomfortable - and in some cases can become more serious. Don't forget to wear your safety glasses or face shield.

## **Make safe work tool changes.**

Understand the warning labels regarding the forks, buckets and other work tools on your jobsite. Know the maximum operating capacities and specifications of the host machine and its lift capacity restrictions. Also make sure you're aware of work tool clearance when operating near obstacles, including those that are overhead, such as tree branches and power lines. Before making a work tool change, check the hydraulic hoses and fittings on both the tool and the host machine. Once installed, operate the tool slowly in an open area to make sure all components are working properly (and not leaking).

## **Conduct pre-shift walk-arounds**

These inspections only take a few minutes, but they are one of the best ways to detect small problems before they become serious. Follow walk-around guidelines in the operating manuals, which should be kept on machines. (Supervisors must allow time for a thorough evaluation.) Start by making sure the machine is clean. That means no grease, oil or hydraulic fluid on the steps, railings or controls. Keep windows clean inside and out for clear visibility. On the outside, check for accumulating debris—such as straw, branches and grass - that could be susceptible to fire. Besides debris, you're looking for leaks, cuts, cracks, rubbing or excessive wear. Use your senses: sight, smell, hearing and touch. Have your operators do quick walk-arounds any time they get off the machines, and again at the end of a shift. Pass all relevant information to other operators and a supervisor.

## **Establish a culture of safety - and a commitment to training**

Prepare a safety manual or safety sheet for the specific conditions found on your site or in your shop. Ensure that all equipment is used for its intended purposes, and forbid removal of safety guards or other protective gear. Retain material safety data sheets for bulk fluids and chemicals. When appropriate, make sure instructions are translated and clearly understood by all workers. Provide regular safety training and conduct weekly training meetings even if you are working in the field. Be certain new workers have been trained before they start working. Give experienced operators a chance to adjust to new machines - and to go through any training needed to assure maximum proficiency. Have them review the OMM to make sure they understand the basics before putting them to work on unfamiliar machines.

This information is not intended as a comprehensive analysis of all hazards related to the product you have rented from Battlefield Equipment Rentals, or to your specific application. More complete information is provided in the Operation & Maintenance Manual (OMM) for specific models. Battlefield Equipment Rentals recommends you and your employees read and understand the OMM before operating or working on any machine.

# EARTH MOVING EQUIPMENT

## SKID STEER LOADERS



Cat® Skid Steer Loaders are designed and built for maximum performance and safety. We are constantly developing and refining advanced power and hydraulic technologies to ensure that our Skid Steer Loaders provide customers with the power, versatility, efficiency, ease of operation and reliability they have come to expect from Cat Equipment.

## COMPACT TRACK & MULTI TERRAIN LOADERS



Cat® Compact Track and Multi Terrain Loaders, with their suspended, rubber track undercarriage, offer exceptional versatility, flotation, traction and stability over a wide range of conditions and terrains.

## HYDRAULIC EXCAVATORS



You can count Cat® excavators to deliver top performance, unmatched versatility, and the industry's best fuel efficiency. You'll also love their ease of operation, their durability, and their latest safety and technology features that will make you the model of productivity.

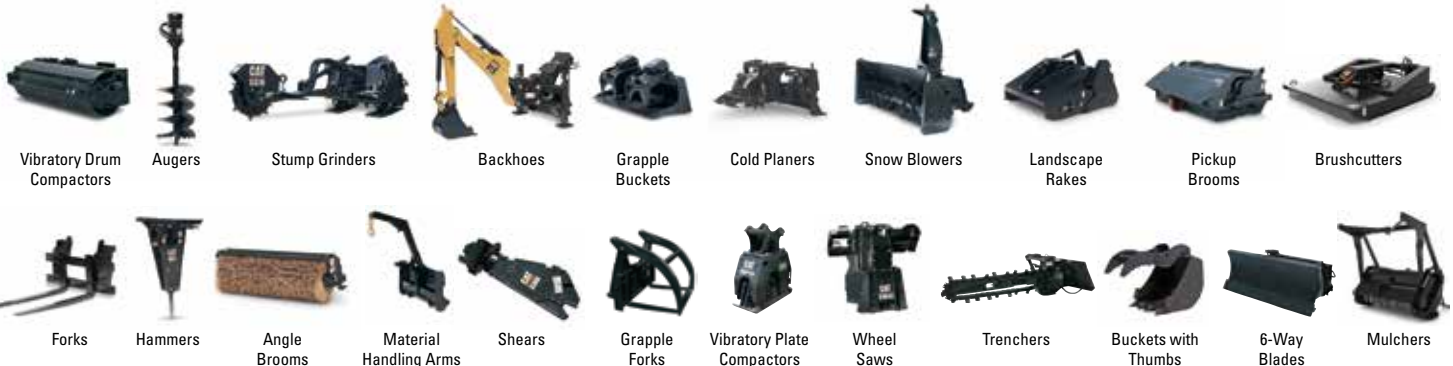
## COMPACT WHEEL LOADERS



Whether you need a wheel loader for use in landscaping, agricultural, construction, waste management, forestry, or mining applications. Caterpillar® wheel loaders make your material handling and loading jobs safer, faster, more precise and profitable.

## CATERPILLAR® WORK TOOLS

Work Tool Attachments tailor compact machines to the specific requirements of a customer's working needs. Caterpillar work tool attachments enhance productivity and utility of compact machines, equipping them for a wide range of tasks and operating requirements, and providing total system solutions for any job application.





# EARTH MOVING, MATERIAL HANDLING & COMPACTION

## BACKHOE LOADERS



With standard pilot-operated joystick controls, a more comfortable operator station, extendible stick design and increased performance, Cat® Backhoe Loaders allow you to get more done with less effort.

## DOZERS



These crawler dozers are ideal for residential construction performing such tasks as clearing and grading lots, sloping the sides of roads, backfilling, and final grade work for landscaping and driveway construction.

## TELEHANDLERS



Cat® Telehandlers are highly versatile machines, designed to deliver maximum performance with traditional Cat reliability, durability and productivity in the toughest working conditions.

## FORKLIFTS



These gasoline and dual fuel powered pneumatic tire lift trucks provide a more attractive operator environment, as well as a more efficient one. These models range in capacity from 5,000 to 7,000 lbs. and come fully equipped with a comprehensive package of high performance and operator comfort features.

## ASPHALT ROLLERS



Large double-drum rollers are easy to set up for maximum compaction efficiency on any type of mix. Utility and Combi compactors provide excellent compaction performance on a wide range of urban and commercial applications.

## VIBRATORY SOIL COMPACTORS



Cat® Vibratory Soil Compactors are durable and reliable. They offer high compaction performance, speed and gradeability to maximize productivity on a wide range of applications. Available in smooth drum models for granular soils and padfoot drums for semi-cohesive and cohesive soils.

# LIGHT COMPACTION

## VIBRATORY RAMMERS



The outstanding features of Wacker Neuson's vibratory rammers are the compact design and high performance. The long shoe stroke, high percussion rate and high stroke energy combined with fast advance travel achieve excellent results.

## GAS & DIESEL PLATE COMPACTORS



Wacker Neuson Reversible Vibratory Plates are designed for compaction of sand and gravel, crushed aggregate as well as mixed soils with some cohesive content. Ideally suited where forward and reverse operation is required, such as in trenches and backfilling along foundations.

## TRENCH ROLLERS



Battlefield Equipment's trench rollers feature a dual joystick control box for easy steering. This "Smart Control" system uses an infrared signal with line-of-sight control for added safety. If the operator comes within five feet (1.5 meters) of the roller's front or rear sensing eye with the control box, the unit will stop moving and vibrating. A smart machine for any jobsite.

## WALK BEHIND ROLLERS



This walk-behind, double drum vibratory roller is capable of performing a wide range of soil and asphalt compaction applications. The exclusive compact design allows for tight side clearance on both sides of the roller. Plus the totally hydrostatic drive eliminates mechanical components providing for less maintenance and greater reliability.



## HIGH VOLUME TRASH PUMPS



Battlefield Equipment's heavy-duty self-priming, centrifugal trash pumps have the muscle and stamina to handle the really tough pumping jobs. When stones, sticks, rags and construction debris clog other pumps, Battlefield Equipment's trash pumps take over. Depending on the model, they can pass up to 4" diameter spherical solids.

## SUBMERSIBLE PUMPS



Gorman-Rupp submersible pumps have overcome the conventional limitation of 25 foot suction lift, making them ideal for high head/high volume applications. They operate quietly and unattended below the water surface, which makes them less prone to weather and vandals.

## TRASH PUMPS



Gorman-Rupp light-in-weight, self-priming, centrifugal utility pumps are engineered to help reduce on-site gas consumption while delivering the high performance you need to get the job done fast.

## PRIME AIRE TRASH PUMPS



Battlefield Equipment Rentals also offers Prime Aire Trash Pumps which are equipped with an auxiliary priming system to ensure automatic prime and reprime, and feature an oversized, oil-lubricated silicon-carbide mechanical seal which allows the pump to run dry intermittently without damage.

# AIR COMPRESSORS & AIR TOOLS

## SMALL AIR COMPRESSORS



Designed for road and public works contractors, public utilities and municipalities who need compressed air to power breakers, chipping hammers, sandblasting and other equipment.

## DIESEL AIR COMPRESSORS



Portable diesel air compressors are compact, efficient, economical and easy to operate. A reliable source of compressed air to drive your pneumatic tools, as well as high free air delivery applications such as sandblasting.

## AIR COMPRESSORS UP TO 1,600 CFM



The latest series of portable air compressors builds on that know-how giving as a result, a heavy-duty series of compressors that are built to work, and work hard.

## AIR TOOLS - CHIPPERS & RIVET BUSTERS



These are effective, reliable tools for fettling of castings, chipping operations in the mechanical industry, hole making and light demolition of concrete.

## AIR TOOLS - BREAKERS & ROCK DRILLS



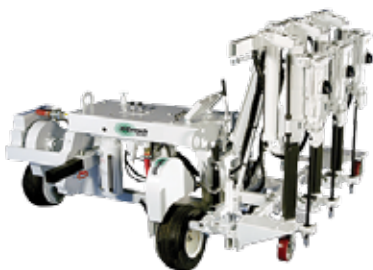
Pneumatic breakers are ideal for general demolition, but not for use in very hard materials or heavily reinforced concrete. Rock drills are designed for bench drilling, secondary drilling and smooth blast drilling.

## MACLEAN MDA HYDRAULIC EXCAVATOR ROCK DRILL



From quarrying operations, to secondary breaking, to construction drilling, the MDA Excavator Rock Drill can do it all. Mounted on a Mini-Excavator and connected to a diesel air compressor.

## SINGLE & 3-GANG DOWEL DRILLS



Multiple-drill self-propelled units with skid steering offer highly productive on-slab drilling solutions. Capable of horizontal and vertical drilling.

## SANDBLAST POTS & EQUIPMENT



Portable sand blasters have proven themselves in countless industrial applications as strong, versatile and dependable machines. Built for the toughest blasting jobs.

## FANS & AIR MOVERS



Air movers will help reduce heating costs by increasing the air circulation. They are very easy and safe to operate with expanded metal safety guards, lifting handles and a moulded power cord.



# GENERATORS, WELDERS, LIGHT TOWERS & TRAFFIC CONTROL

## PORTABLE GENERATORS



Portable generators offer the flexibility to power tools and other applications in the middle of a jobsite where electricity is unavailable.

Gas generators up to 2.5 - 6 KW are available.

## DIESEL GENERATORS



Our Mobile line of diesel generators fulfill larger power needs, while maintaining exceptional mobility. Built for reliability and toughness, they excel in the most extreme conditions - delivering power wherever and whenever you need it.

Diesel generators up to 125 kW / 600V are available.

## LIGHT TOWERS



A mobile light tower package that includes a Diesel engine attached to a generator wired for 120/240 volt, single phase. Package includes four (4) 1,250 watt Metal Halide floodlights mounted to a 30' four section galvanized manual telescoping tower.

## WELDERS



The Classic 300D is a pure DC generator arc welder that is great for pipeliners & contractors. The unit offers 300 amps with five current ranges. The Commander 500 features advantages of Chopper Technology to control the DC welding output and create an arc with superior welding performance.

## ARROW BOARDS



Arrowboards provide very easy and simple operation. The portable, changeable arrow boards are designed to offer the travelling public simple directions for lane closures and traffic directions.

## MESSAGE BOARDS



The portable, changeable message boards are designed to offer the travelling public as much information as permanent signage, yet do it much more simply and flexibly.

## PORTABLE TEMPORARY TRAFFIC SIGNALS



Portable temporary traffic signals provide safety in work-zones, cross roads and intersections. Set-up can be done by one person in just minutes with minimal training required.



# CONCRETE PRODUCTS

## POWER TROWELS



Ideal for floating and finishing concrete surfaces, power trowels are rugged and designed for tough trowel jobs in harsh conditions.

## FLOOR SAWS



Our extensive range of flat saws includes productive saws for floors, driveways, highways, streets, runways, new and old concrete and asphalt.

## CONCRETE SAWS



Battlefield Equipment's extensive inventory means you can always find the right concrete saw to get any job done, with maximum efficiency.

## CONCRETE VIBRATORS



The ultimate in hand-held powered vibration, our vibrators are light-weight, but powerful and provide excellent consolidation of concrete.

## HIGH CYCLE CONCRETE VIBRATORS



High-cycle vibrators are used with low-slump concrete where consistent power is needed to work a stiff mix into corners, around rebar and remove entrapped air pockets.

## CONCRETE SCREEDS



Fast and easy to use, this high-frequency screed provides uniform distribution over the entire blade length, enhancing structural integrity of the concrete through consolidation.

## CONCRETE BUGGIES



The high density poly bucket is impact resistant and designed to withstand the toughest use. Handling is simplified with convenient lifting points.

## MORTAR MIXERS



From a small wheelbarrow style to a heavy-duty totally enclosed gear drive mixer, Battlefield Equipment Rentals has a full line of mortar mixers.

## CONCRETE MIXERS



At home, on the farm and on the construction site, these thick steel drum mixers will stand up to a lot of pounding.

# CONCRETE PRODUCTS

## CONCRETE SPRAYERS



Cure concrete with Battlefield Equipment's line of hand-held concrete sprayers.

## CORING DRILL



Battlefield Equipment Rentals offers various sizes of coring drills. Our units have a small anchor base and carriage, and wheels for better mobility.

## FLOOR GRINDER



Battlefield Equipment's line of floor grinders combines performance and dependability to tailor a solution for every surface preparation need.

## SONOTUBES



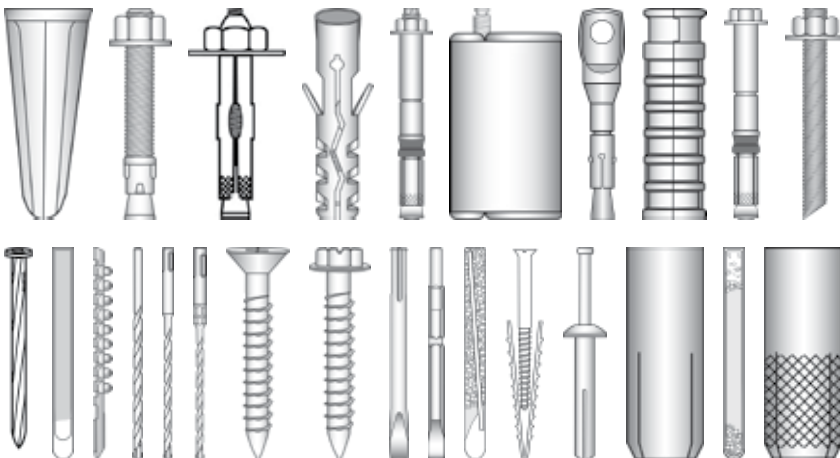
Battlefield Equipment Rentals carries a full variety of sonotubes in all sizes that you will need for your project. Newform concrete forming tubes combine strength, value and ease of handling, making them the ideal forming method for concrete columns, footings and piers.

## FORM HARDWARE



Battlefield Equipment Rentals has a full stock of concrete form hardware, inserts, anchorages and accessories for the construction industry.

## FASTENERS



Battlefield Equipment Rentals is especially well equipped to supply many types of application-specific anchors. Custom sizes and protective coatings are available to meet design requirements. The Battlefield Equipment line of anchors and fasteners for the construction industry is perhaps the most extensive available and it includes several unique products. In addition, Battlefield Equipment is exceptionally well equipped to supply special devices, sizes, and finishes when required.

# CONSTRUCTION HEATERS

## DIRECT FIRED HEATERS



Featuring electronic ignition, thermostatically controlled heat, quick changeover from propane to natural gas, easy relocation with wheels and hooks, direct fired heaters are the ultimate in portable heating that brings instant summer to the winter workplace. Available from 150,000 – 2,250,000 BTU.

## INDIRECT FIRED HEATERS



An indirect fired unit can be used in applications where the job site has potentially dangerous and combustible fumes or dust. The heat exchanger provides a barrier from open flame, making it safer than other units. Indirect fired heat is a great way to cure concrete and finish drywall.

## RADIANT HEATERS



The radiant construction heaters emit radiant heat in all directions. It warms surfaces, not air. The surface areas of an enclosed room or frozen basement are heated very quickly.

## GROUND HEATERS



Thaw ground quickly, easily and economically like it's summer. With Ground Heaters from Battlefield Equipment Rentals, you are able to avoid jobsite down time by excavating, pouring and curing concrete all winter long. These units allow you to thaw up to 1 foot per day, over an area of up to 6,000 ft<sup>2</sup>.

## PUREHEAT HYDRONIC AIR HEATERS



Durable and versatile for all heating applications, these medium duty air heaters bring efficient heat to various workspaces. They offer up to four times more static pressure and double the cfm of traditional air heaters.

## INDIRECT FIRED HEATERS



Powerful liquid-to-air heat exchangers bring clean, dry, heat to your workspace. Three models: HX50, HX100 and HX200 are available. Simply position Heat Xchangers inside structure and aim where you would like the heat to go. Easily load and unload the Heat Xchangers using light weight built-in ramp.



# CONSTRUCTION LASERS & SURVEY SUPPLIES

## EXTERIOR FLAT LASER



Exterior flat lasers are used for checking/setting elevations, basic slope work and excavation. Fully automatic self-levelling capabilities, along with superior drop and weather protection means less downtime.

## INTERIOR CEILING / WALL LASER



Interior Ceiling / Wall Lasers are used for levelling and aligning, interior wall layout and installation of ceilings.

## PIPE LASER



Pipe Lasers are used in installation of gravity flow sanitary and storm sewer pipelines along with pipe jacking and tunnel boring.

## POCKET SPOT LASER



Spot Pocket Lasers are ideal for a range of applications including installing fixtures, putting in walls and levelling foundations.

## SINGLE SLOPE LASER



Slope Lasers are automatic self-levelling lasers that do three jobs: level, grade and vertical alignment with plumb.

## ELECTRONIC BAR LOCATOR



Our magnetic locators include a multitude of convenience features, like LCD visual display and/or audio tone, a lightweight, easy-grip design, & water resistant cases.

## AUTOMATIC LEVEL



Automatic Levels are used for two-person levelling across the jobsite, levelling forms and footers, checking elevation along with a variety of other applications.

## TRANSIT / THEODOLITE



Designed for general construction and survey applications, electronic digital theodolites give accurate measurements in an easy-to-use platform.

## TOTAL STATION



From high-order control surveys to topographic data collection or fast-paced construction stakeout, our Laser Stations quickly and reliably increase your staking productivity.

# LANDSCAPING EQUIPMENT

## PRESSURE WASHERS



Pressure washers are ideal for cleaning driveways, building exteriors, patios, porches, fences, large decks and vehicles.

## LOG SPLITTERS



Battlefield Equipment Rentals offers log-splitters that allow you to split wood on both the forward and reverse strokes allowing for higher production.

## WOOD CHIPPERS



Battlefield Equipment's line of wood chippers allow you to tackle tough brush chipping projects. These units are available in a variety of sizes to fit your project requirements.

## CHAINSAWS



Battlefield Equipment offers a full line of electric, consumer, semi-professional, professional, and specialty saws, to meet a wide range of cutting needs.

## LEAF BLOWERS



Clear debris from patios, driveways, lawns, and all the hard to reach places around the home and jobsite.

## BACKPACK BLOWERS



Battlefield Equipment Rentals offers a full line of powerful and versatile back-pack blowers to tackle any project, large or small.

## ROTO TILLERS



Battlefield Equipment's line-up of Roto Tillers provides the power and maneuverability for every kind of tilling job.

## SOD CUTTERS



Battlefield Equipment's sod cutters offer good balance, easy handling, and easy depth and blade angle adjustment for varying soil conditions that last through the toughest conditions.

## LAWN MOWERS



Full line of lawn movers that offer maximum mowing performance and flexibility for all sized projects.



# LANDSCAPING EQUIPMENT

## WHEEL BARROWS



Available in all sizes. Large or small applications, Battlefield Equipment Rentals has the proper size for your application.

## AERATORS



Full-featured and highly maneuverable, Battlefield Equipment's line-up of aerators deliver precision coring.

## STUMP GRINDERS



A line-up of machines that are tough, reliable and easy to operate, and have been proven on virtually every type of hardwood stump.

## AUGERS



Battlefield Equipment Rentals offers a full range of augers in gas, hydraulic and manual powered units for all sized projects.

## SNOW BLOWERS



Battlefield Equipment Rentals offers snow blowers that clear large paths of snow for quicker job completion.

## STRING TRIMMERS



Electric & gas trimmers are ideal for trimming hard to reach places along the side of a house or garden, around tree trunks and under bushes.

## HEDGE TRIMMERS



Battlefield Equipment offers a full-line of hedge trimmers designed for a variety of purposes from parks and landscape gardening, to large gardens and estates.

## SWEEPERS



Complete line of walk-behind sweepers for all applications, from sidewalk and driveway sweeping, to snow removal and outdoor cleanup.

## TRENCHERS



From pedestrian to machine attachment, Battlefield Equipment Rentals has the proper size trencher for your trench digging application.



# ELECTRIC TOOLS

## ROTO & DEMO HAMMERS



Battlefield Equipment's line of rotary hammers and demolition hammers can cope with any situation, no matter how tough the material.

## BREAKERS



The breaker is designed for breaking concrete, cutting asphalt, tamping ballast, digging and other tasks, offering sustained durability and minimal down time.

## DRILLS



Regardless of medium - masonry, wood, metal tiles or composite materials, Battlefield Equipment has the proper drill for all applications.

## HAMMER DRILLS



With high-performance and high operating comfort, Battlefield Equipment's line of hammer drills make even the hardest drilling work easy.

## GRINDERS



Whether you are grinding or cutting in concrete, masonry, or stone, we have the proper grinder for your needs.

## PLANERS



A full line for fast and precise working that allows you to smooth surfaces or reduce wood faces and edges.

## ROUTERS



The router is ideal for rebating, grooving and recessing work in workshops or on site.

## SANDERS



A powerful sander that sands flush to an edge and is suitable for all heavy-duty operations.

## CIRCULAR SAWS



A hand held saw for general woodworking. Adjustable depth of cut and angle cutting facility. Ideal for precise straight, cross and mitre cuts.

# ELECTRIC TOOLS

## DRYWALL SCREWGUN



Drywall Screwguns are designed for fast, accurate installation of self-drilling fasteners.

## WRENCHES



Impact Wrenches deliver strong sudden torque for larger nuts and bolts that are frozen on, or over-torqued.

## MAGNETIC DRILLS



This combination unit features an adjustable position, variable speed base and a 1-3/4" drill motor.

## BAND SAWS



Band Saws are ideal for woodworking and metal working. With high torque and powerful motors these band saws will maintain a steady, optimum blade speed.

## JIGSAWS



Jigsaws are ideal for cutting curves into pieces of wood or metals. Variable speed dials, bevel cuts, lock on button for extended use, low noise and low vibration for extra accuracy & steady handling.

## METAL CHOPSAW



Chop Saws are designed to make quick, accurate crosscuts in a workpiece. Powerful motors and durable designs ensure quality and reliability.

## MITRE SAWS



With a combination of accuracy and flexibility these saws are ideal for shop-fitters and joiners.

## TABLE SAWS



Ideal for general purpose site-work, ripping down sheet material, sizing boards, cutting shuttering and fencing.

## RECIPROCATING SAWS



The reciprocating saw is used for rough cutting and demolition tasks, such as cutting through rebar or support beams.

# ELECTRIC & CONSTRUCTION TOOLS

## QUIKDRIVE SCREWGUN



Auto-feed screw driving systems are ideal for a broad range of fastening applications because they feature quick-loading screw strips, precise countersink adjustment, and a patented auto-advance mechanism.

## INDUSTRIAL DEHUMIDIFIERS



Our industrial dehumidifiers are high capacity units that provides quick, efficient dehumidification in extreme conditions of flooding and moisture problems.

## WET / DRY SHOP VAC



Provides maximum power for the heavy-duty pick up of water & debris in the shop, basement, garage or on the job.

## PORT-A-COOL



These portable evaporative cooling units operate on tap water and 110V electricity to keep employees and equipment cool.

## FUEL CONTAINERS



Reduce fleet downtime with portable fuel containers that meet all federal regulations.

## PIPE THREADER



Manual or power, large or small, Battlefield Equipment has a full line of pipe threaders to meet your needs.

## PIPE WRENCH



From the smallest circumference to the largest, we have heavy-duty pipe wrenches to fit them all.

## POWER DRAIN AUGER



For performance, cable control, durability, and manoeuvrability demanded by professional users, our line of power drain augers are ideal for any tough job.

## DRYWALL PANEL LIFT



The drywall panel lift is ergonomically designed to save your back and is easy to transport, assemble, and operate, making drywalling a one person job.



# FLOORING TOOLS

**TILE  
CUTTER**



**CARPET  
KNEE KICKER**



**FLOOR  
MAINTAINER**



**HARDWOOD  
FLOOR NAILER**



**TILE  
ROLLER**



**FLOOR  
SANDER**



**SANDER,  
FLOOR EDGER**



**TILE  
STRIPPER**



**MAGNETIC  
SWEEPER**



**TILE SAW,  
TUB SAW**



**STAPLER**



**VINYL  
TILE CUTTER**



# LADDERS, SCAFFOLDING & NXBURST

## ALUMINUM & FIBERGLASS LADDERS



Battlefield Equipment Rentals carries a full line of aluminum and fiberglass industrial Class 1A step ladders (6' - 16' heights) and Class 1A extension ladders (16' - 40' heights). Units are sold new, or available for rent.

## SCAFFOLDING



Scaffolding is temporary framework used to support people and material in the construction or repair of buildings and other large structures. Battlefield Equipment's modular system of metal pipes comes in a variety of lengths to meet individual needs. Couplers to hold the tubes together and boards to provide a working surface for users are also available to meet individual needs.

## NXBURST ROCK BREAKING TECHNOLOGY - THE BETTER WAY TO BREAK ROCK & CONCRETE



Breaking rock and concrete in confined or sensitive areas is no longer a problem. Break rock and concrete with minimal fly rock, low vibration, reduced noise and requires only localized clearance of equipment and personnel. The unique characteristics of the NXburst™ cartridge make it the product of first choice in any rock breaking application or demolition site in environmentally sensitive areas, or in close proximity to existing infrastructure.



NXburst™ cartridges are available in 12mm, 28mm, 34mm and 60mm diameters; and in charge-weights from 2g to 500g. The large range of sizes and charge weights allow NXburst™ to be used for a wide range of civil excavation and mining applications.



# AERIAL WORK PLATFORMS

## SCISSOR LIFTS



In terms of reliability and agility, our equipment is second to none in both industrial and slab-type applications. With battery and dual fuel units, and driveable at full height, the SkyJack series rises above all challenges wherever mobility and high reach requirements are a factor. 14' to 50' models available.

## ARTICULATING BOOMS



Ideal for outdoor construction and industrial applications Genie® engine-powered articulating booms provide lifting versatility with a combination of up, out and over positioning capabilities and outreach that's second to none.

## TELESCOPIC BOOMS



Telescopic booms offer greater horizontal outreach than any other type of aerial platform — perfect for areas with limited access in construction and industrial applications. Genie® telescopic booms are also designed for productivity with the traction and drive speed you need to get around the job site and to the work area.

## TRAILER-MOUNTED BOOMS



Genie® trailer-mounted booms feature an outstanding operating envelope, making them ideal to reach jobs high and low. With easy-to-tow mobility and simple pictograph controls, it's no wonder that Genie trailer-mounted booms take productivity to new heights.

## PERSONAL PORTABLE LIFTS



Personal portable lifts offer facility maintenance workers a secure platform and the ability to work 360 degrees with both hands. Personal portable lifts can be assembled in just minutes, are extremely portable and feature a convenient tool tray. It's a safer choice for plant and facility maintenance projects.

## TEREX® HYDRA PLATFORMS



The Terex® Hydra Platforms is a comprehensively equipped under-bridge access and work platform, mounted on a mobile trailer for versatility. Terex Hydra Platforms offers standard Dual Side Hydraulic Outrigger Stabilizers, providing maximum stability and an added level of safety.

# GROUT & BONDING AGENTS

## Grout & Bonding Agents

Battlefield Equipment carries a full line of grouts, sealers, release agents, white cures, admixtures, epoxies, forming hardware and concrete patch repair for any of your jobsite needs. For more details, call your nearest Battlefield Equipment Rentals location at 1-800-RENT-CAT.

### M-Bed Standard

A non-metallic, non-shrink, gassing grout composed of cement, gassing and flow agents, and graded siliceous sand. This economical general purpose grout can be used for the installation of anchor bolts, machine equipment base plates and column sole plates.

### Sika Top 121 Plus, Sika Top 122 Plus, Sika Top 123 Plus

Polymer-modified, PLUS migrating corrosion inhibitor, cementitious, two-component, fast-setting mortar.

### Diamag 7

An economical, mineral shake-applied surface hardener. Special dispersing and plasticizing agents promote ease of incorporation into the concrete surface. Premixed and ready to use.

### Florseal WB

An acrylic emulsion and water based curing compound. Adheres to damp concrete and seals in the moisture necessary for curing and hardening the surface. Available in clear formulation only.

### NS Grout

Designed for critical use where high strength, non-staining characteristics and positive expansion are required. It is extremely flowable, and when cured, appears similar in appearance to concrete.

### Diamond Clear, Super Diamond Clear

State of the art curing and sealing compound, specially designed to provide a quality cure and seal while assuring total resistance to yellowing from ultraviolet exposure.

### Surflex Hardener

A quartz-silica mixture of finely graded nonmetallic aggregates, plasticizer and cement binder. An economical concrete floor hardener, recommended for both interior and exterior use.

### Verticoat Supreme

A one component, microsilica and latex modified, non-sag repair mortar. Designed for trowel applied vertical and overhead repairs requiring high performance.

### Concrete-Top Supreme

Provides excellent durability under freeze-thaw cycling as well as reducing ingress by water and de-icing salts.

### PVC Waterstops

Embed in adjacent pours of concrete to prevent the passage of water from liquid-containing structures or through foundation walls and tunnels at construction and expansion joints.

### Fibre Expansion Joint

Ideal for use on highways, streets, airport runways, sidewalks, driveways, flatwork and scores of commercial and industrial applications subject to pedestrian and vehicular traffic.

### DuoGuard

Release agent for all types of forms - wood, steel, fiberglass, plastic and paper, including pretreated panels and tubes. May also be used to soften concrete build-up on tools and equipment.

### 1220 White Cure

Ideal for application on exterior, horizontal surfaces such as highways, airports, street and curb paving - for excellent curing when protection from the sun's heat is desired.



Authorized distributors for:

**Pestell**



**KING**





# ENVIRONMENTAL FABRICS

## TARPS & ENCLOSURES



This enclosure system is the best way to solve many cold weather problems; it is also the best answer to improving worker efficiency in areas with severe weather conditions.

## EROSION & SEDIMENT CONTROL



Battlefield Equipment Rentals has many different types of erosion & sediment control products to suit almost any application.

## FLOATING COVER SYSTEMS



Sizes from 7.5' to 20' deep by 50' long. Floating cover systems isolate silt or other hazardous materials while working in an aquatic ecosystem. Can assist in preventing costly environmental clean-up and liability.

## GEOMEMBRANE CONTAINMENT



Polypropylene geogrids are used for high strength applications where biaxial strength is required.

## SOIL REINFORCEMENT



Reinforcement Geosynthetics provide cost effective methods for designing reinforced soil walls, steepened slopes, and embankments.

## CATCH BASIN SEDIMENT TRAPS



Catch Basin Sediment Traps (CBST's) are placed in catch basins to filter silt from runoff water.

## SILT FENCE



Silt Fence is a temporary silt control device that helps to prevent the loss of silts from a site during rain, or other run-off events.

## MANHOLE RETRIEVAL SYSTEM



Used for manhole and confined space entry and retrieval applications.

## SPILL KITS



Battlefield Equipment Rentals can supply a full variety of spill kits for your emergency response needs.

# SAFETY PRODUCTS & SITE SUPPLIES

## SAFETY GLASSES



## SAFETY BOOTS



## HEARING PROTECTION



## GLOVES



## SAFETY VESTS



Can be personalized with your logo.

## CAUTION TAPE



## FIRST AID KITS



## RAIN SUITS



## HARD HATS



Can be personalized with your logo.

## RESPIRATORY PROTECTION



## HARNESSES



## HAND TROWELS



# SAFETY PRODUCTS & SITE SUPPLIES

## WATER COOLERS



## MARKING PAINT



## TRAFFIC CONES



## STOP / SLOW PADDLES



## FLASHING DELINEATORS



## TRAFFIC BARRELS



Can be personalized with your logo.

## STORAGE CONTAINERS



## HAND TOOLS



## HOSES



## EXTENSION CORDS



## ABRASIVE BLADES



## DIAMOND BLADES





## eCOMMERCE

### Contract Inquiry

Online "Invoice Lookup" provides details of all rental and sales transactions along with copies of delivery and pickup documents. Don't spend time looking for documents. Battlefield does the job for you.

### Invoice Lookup

Real time reports of rental equipment on your jobsites can help maximize expenditures and keep your control system up to date.

### On Line Invoice Approval

With a click of a mouse, you can approve invoices, add job cost information and notes for future reference. Keep your job costs under control by reviewing invoices electronically, even from remote job site locations.



## BATTLEFIELD LASER & GPS SERVICE & REPAIR CENTRE

Located at Battlefield Equipment's Brampton location, this factory authorized service facility is ready to handle all your laser & GPS service needs using service technicians that have unmatched qualifications and experience. With a complete inventory of parts from industry manufacturers, we can offer complete repair and service on any make and model of construction lasers, levels, total stations, theodolites, locators, Trimble GPS systems, and much more.

Simply bring your equipment to any Battlefield Equipment location and we will have your laser properly serviced and quickly returned to you at the lowest prices in the industry.



## JOBSITE INDUSTRIAL RENTAL SERVICES

Whatever you need for your business - we are ready to handle all of your plant maintenance, factory and industrial needs. Equipment for hoisting and rigging, machinery moving, welding, pipe bending, pipe fabrication, generators, jacks and more! Come on in and check out our inventory, and walk away with whatever you need for the electrical, mechanical, welding, millwrighting and rigging trades. Don't run yourself ragged shopping all over town. Try our one-stop shop. Visit Jobsite Industrial Rental Services today for all your contracting needs.

**1-888-634-3030**

Locations throughout Ontario



# Professional Safety Training Services

With constant safety regulation changes in the construction industry, it is important for the contractor to stay ahead. At Battlefield Equipment Rentals we understand how important due diligence, compliance issues and safety awareness are. Let our team of safety professionals help you untangle all of your safety training issues. Call us today for a no cost estimate for all your training needs.

**BattlefieldEquipment.ca | 1-800-RENT-CAT**



## Our Training Services include:

- Elevated Work Platform Certification (Scissor & Boom Lift)
- Working at Heights Training & Certification
- Fall Arrest & Prevention Training
- Skid Steer Safe Operator Certification
- Excavator Safe Operator Certification
- Backhoe / Loader Safe Operator Certification
- Mobile Equipment Safe Operator Certification
- Chainsaw Safe Operator Certification
- Concrete Cutting Tools Safe Operator Certification
- Electrical Tools Safe Operator Certification
- Powder Actuated Tools Operator Certification
- Record of Training Propane (up to 400,000 BTU)
- Record of Training Natural Gas (up to 400,000 BTU)
- Traffic Control Awareness
- Scaffold Safety Awareness
- Forklift Certification
- WHMIS Awareness
- Hoisting & Rigging
- First Aid / CPR / Defibrillation
- Asbestos Awareness
- Supervisor Training



# RENTAL FENCE FOR YOUR JOBSITE

Whether it's a construction jobsite, a propane bottle enclosure or a temporary compound for Christmas trees or a garden centre, Battlefield Equipment can provide the rental fence you need in order to provide privacy, security and an image to meet the needs for your site. We understand your jobsite cycle and all of its challenging tasks, as well as its tight deadlines. Our staff has the experience and commitment to meet and exceed all your expectations. Our fence is available in heights of 4', 6' and 8', and with more than 1.5 million feet of inventory, no jobsite is too big or too small.

Delivery, installation and removal is included in the price with no hidden fees, and delivery is guaranteed within 24 hours.





# RENTAL FENCE FOR YOUR JOBSITE

DELIVERY, INSTALLATION AND REMOVAL IS INCLUDED IN THE PRICE  
WITH NO HIDDEN FEES, AND DELIVERY IS GUARANTEED WITHIN 24 HOURS.



## Rental Fence for Construction Sites

Our rental fence is not a chain link fence, but a much more stable and secure welded metal panel using an interlocking system. The panels have a powder coated finish coloured forest green, which is more visually appealing than the standard metal fence. The fence panels are extremely sturdy and stable, which can be installed as a free standing system, anchored in loose terrain, or secured onto concrete or asphalt. Gates for vehicles or personnel can easily be installed in any location in the fence line.



## Rental Fence Installation

Our rental fence system is not only the most superior product on the market, but we also put forth a fully certified and qualified operator's team that executes delivery, installation and removal of the fence on your site. Our staff go through an extensive training program that fully educates them all about the safety procedures on the road and on your site, ensuring an injury free environment. Proper safety techniques are used during installation, and our staff are fully equipped to handle any concerns or questions regarding the fence or safety accessories.



## Propane Storage Enclosures

Propane storage enclosures are available in many sizes and configurations starting at 10' x 10'. Separation for full and empty cylinders, gates and signage will help keep your site clean and compliant. Our set price includes set-up, take down and delivery.



## Garden Centre Compounds & Christmas Tree Lots

Our rental fence system offers a safe and secure storage compound for seasonal products, such as Garden Centre Compounds or Christmas Trees. Our gates and fencing will keep your site accessible, clean and organized throughout the season. We can also set-up our fence panels to help provide separation of seasonal products and supplies, providing a customer friendly environment. Our rental fence can be customized to any size you desire, and can be installed on any terrain.



## Limit Visual Access with Privacy Screening

Some occasions call for a measure of security or intimacy from the general public outside the perimeter of the grounds. Common examples might include concerts, beer gardens, or VIP compounds. We can install a privacy screen during the initial installation that will provide approximately 90% visual blockage.





# NEW EQUIPMENT SALES

EQUIPMENT YOU NEED WITH THE VERSATILITY TO PERFORM  
EFFICIENTLY ON ANY JOBSITE.

Battlefield Equipment Rentals offers a full range of new Caterpillar machines and other brand name tools and equipment to meet all of your jobsite needs. Our entire line-up of products is available for sale or rent.

Whether you're a small contractor, or a large construction company, you need equipment with the versatility to perform efficiently on any jobsite.

Battlefield Equipment has the equipment you need to keep you productive all day long - whatever job you're working on. And, since reliability and dependability are key to your success, you can count on Battlefield Equipment Rentals to keep your business running.

Your business means everything to you. And, it means the world to us at Battlefield Equipment Rentals. Whether you have questions about machine applications, performance, financing or service, Battlefield Equipment Rentals will be glad to help you find the right answers. We're always prepared to give you the support and service you need to be successful.



# PARTS & SERVICE

YOU CAN COUNT ON BATTLEFIELD EQUIPMENT  
FOR THE SUPPORT YOU NEED, WHEN YOU NEED IT.

At Battlefield Equipment Rentals, our entire team is ready to handle your requirements on the jobsite, whatever they may be. If you are unable to find time to properly service your own equipment, simply give us a call and we will be pleased to service your equipment for you. Our team of highly skilled mechanics are available at every location and will thoroughly check your equipment and make sure it is in excellent working order.





# RENTAL & USED EQUIPMENT

YOUR SINGLE SOURCE FOR ALL YOUR EQUIPMENT NEEDS

## Rental Equipment

Battlefield Equipment Rentals offers a full range of Caterpillar machines and other tools and equipment to meet all of your jobsite needs. And, because we rent newer equipment, that is fully serviced by expert mechanics, it's ready to work when you are. With a full range of Cat machines and name brand rental equipment... Battlefield Equipment Rentals is your one-stop-shop for all your equipment needs.

Battlefield Equipment makes equipment knowledge a number one priority. We hire and train the best people, so you get the right equipment to do the job efficiently. To handle your complete rental needs, we also sell a wide selection of specialized tools and supplies. Since there's no time for downtime, we carry the leading equipment brands and follow good maintenance practices to ensure equipment will perform reliably on your jobsite. We have a complete service department with trained service technicians. On every rental we check it out before you rent it out. Rentals are not our only business. If you need a machine or tool for purchase, our rental experts are trained to sell everything we rent, including Cat equipment.

- > Renting Is Easy. Get the equipment you need, when you need it.
- > Renting Is Economical. Need a specialized tool for a specialized job? Rent it!
- > Renting Is Efficient. Newer equipment, competitive rates, prompt delivery.
- > Renting Is Flexible. Rent by the day, by the week, or by the month.
- > Renting Is Smart. Eliminate service hassles. Before you rent it out, we check it out.
- > Renting Is Versatile. From backhoes to jackhammers, we have all the equipment you need.

## Used Equipment Sales

If you are in the market to purchase used tools or machines, Battlefield Equipment Rentals also sells everything that we rent. Please contact your local Battlefield Equipment Rentals location or Sales Representative and they will provide you with a complete list of Used Equipment that is available to you. You can also see the up to date used equipment list that is available on our web site, [www.BattlefieldEquipment.ca](http://www.BattlefieldEquipment.ca).



## TOOLS & SUPPLIES

## YOUR SINGLE SOURCE FOR ALL YOUR PROJECT NEEDS

From power cords to tools, hard hats to ladders, and boots to vests, we carry all the specialized tools and name brand supplies to meet all of your jobsite needs.

These are just some of the tools and supplies you'll find at Battlefield Equipment Rentals ...

Blades - Boots - Brooms - Brushes - Barricades - Cables - Chains  
Chests - Concrete Chemicals - Concrete Forms - Concrete  
Supplies - Cones - Coolers - Cords - Drill Bits - Ear Protection -  
Electrical Supplies - Eye Wear - Fall Protection - Fencing - Fire  
Extinguishers - First Aid - Flags - Fuel Tanks - Glasses - Gloves -  
Goggles - Hammers - Handles - Hard Hats - Harnesses - Heaters -  
Hooks - Hoses - Water Coolers - Ladders - Lasers - Levels - Lights  
Diamond Blades - Marking Chalk - Masonry Tools - Measuring  
Devices - Radios - Nail Stakes - Nylon Slings - Pavement  
Breakers - Paint - Pliers - Poly Cover - Power Cords - Power  
Tools - Racks - Rain Gear - Rebar - Rope - Sanding Products -  
Safety Equipment - Screwdrivers - Security Chain - Shop Tools -  
Shovels - Signs - Sprayers - Storage Boxes - Sweepers - Tapes -  
Tampers - Tire Sealant - Tools - Traffic Cones & Barrels - Tripods -  
Truck Boxes - Twine - Vests - Welding Supplies - Wheelbarrows -  
Wheel Grinders - Winch Hoists - Wrenches ... and MORE!









BattlefieldEquipment.ca | 1-800-RENT-CAT