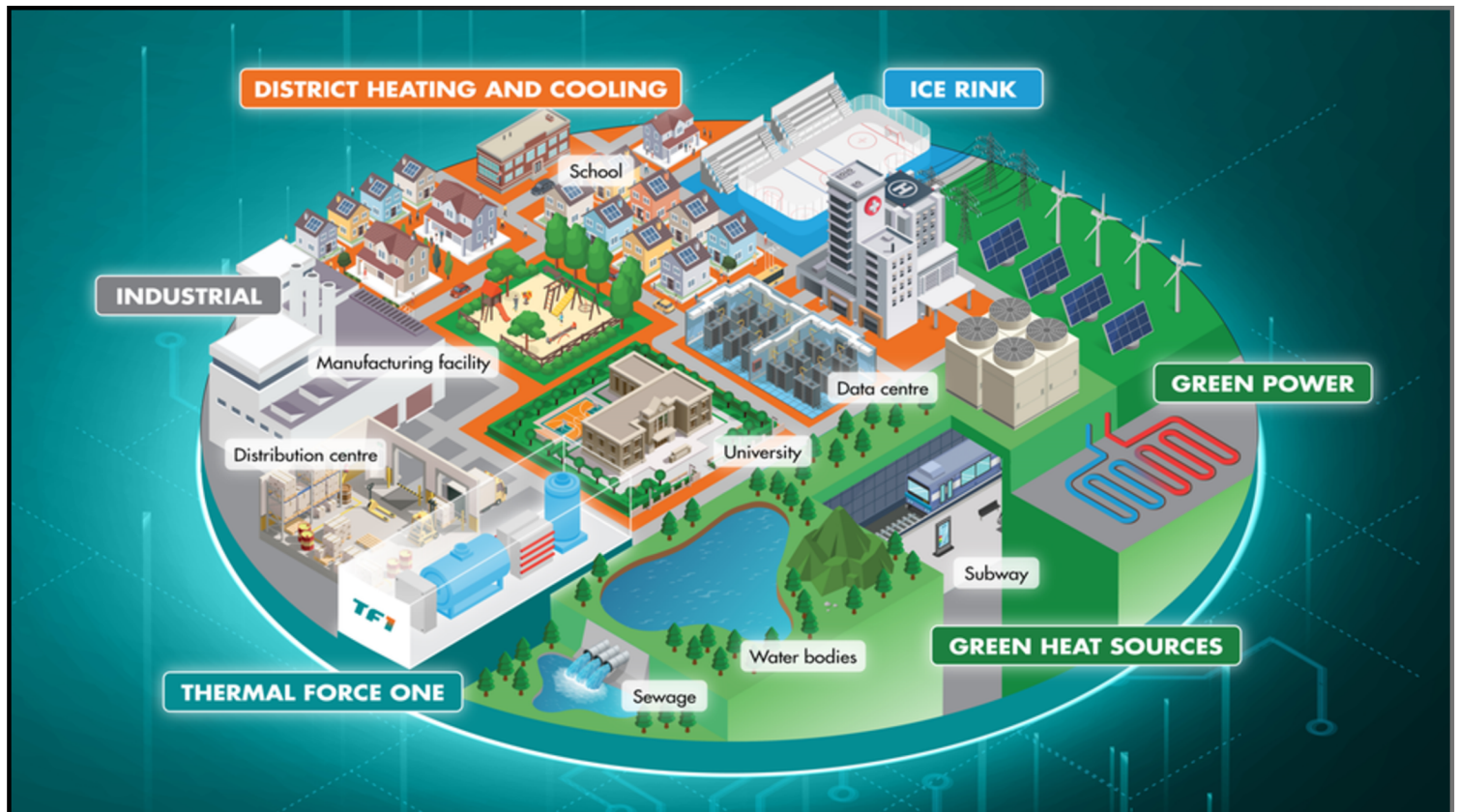


# POWER UP YOUR BUILDING'S ROLE IN THE RACE TO NET-ZERO EMISSIONS






## START YOUR DECARBONIZATION JOURNEY WITH CIMCO

### THE FACTS ARE STRAIGHT FORWARD: NET-ZERO BUILDINGS MAKE BOTH ENVIRONMENTAL AND FINANCIAL SENSE.

We help you save energy and reduce costs by transforming your buildings into efficient, interconnected hubs of thermal energy. By seamlessly integrating your heating and cooling systems, we ensure energy flows smoothly from production to consumption. This means you can harness thermal energy from everyday operations and natural sources, powering your buildings more sustainably and reducing your environmental impact.



### A DECARBONIZATION STRATEGY BUILT FOR YOU

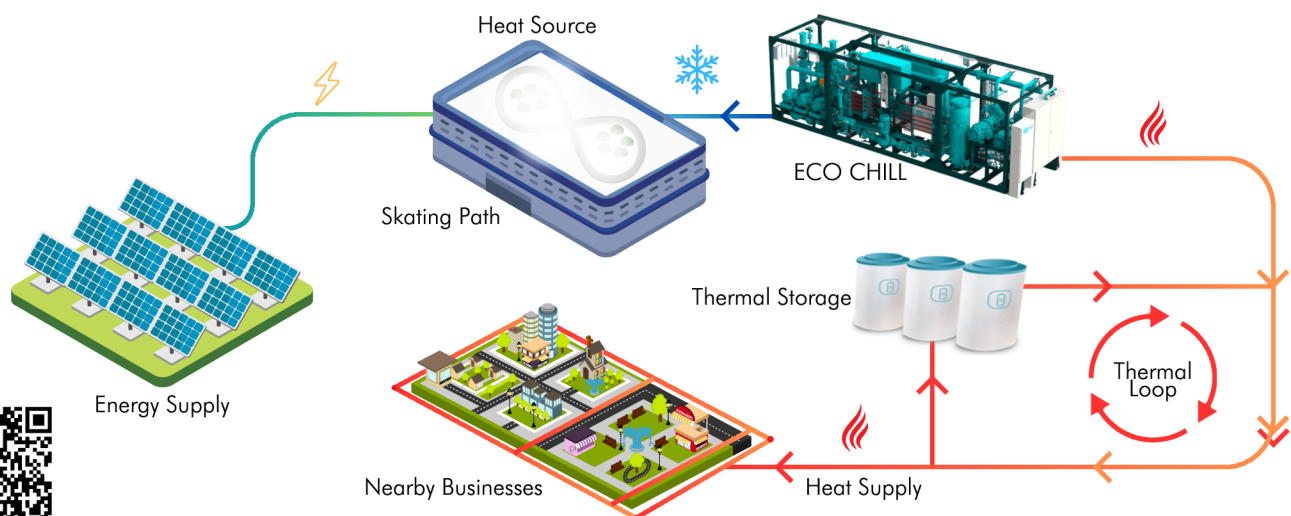
-  In-depth energy audits and funding application support
-  Adoption of renewable energy sources
-  Implement energy efficient measures
-  Transition thermal systems to low-carbon solutions
-  Long term energy reduction strategies

# Shipyards Outdoor Rink Integrates with Community District Energy Network for Optimum Efficiency

## The Shipyards Skate Plaza in North Vancouver

The Shipyards Outdoor Rink in North Vancouver has integrated with the community's district energy network to achieve optimum efficiency. This rink, the only outdoor one in North Vancouver, uses a CO<sub>2</sub> thermal system that repurposes waste heat to provide energy to nearby commercial and residential buildings. This innovative approach not only supports the rink's operations but also contributes to the community's overall energy efficiency.

The rink's CO<sub>2</sub> chiller system is connected to the Lonsdale Energy Corporation (LEC) District Energy System. This connection allows the heat generated from the ice-making process to be captured and redistributed to heat surrounding buildings. This integration is a prime example of how sustainable practices can be implemented in recreational facilities to benefit the broader community.



Scan for more  
information