

# Net Zero NATURALLY

## HOW TO REDUCE YOUR FACILITY'S FOOTPRINT



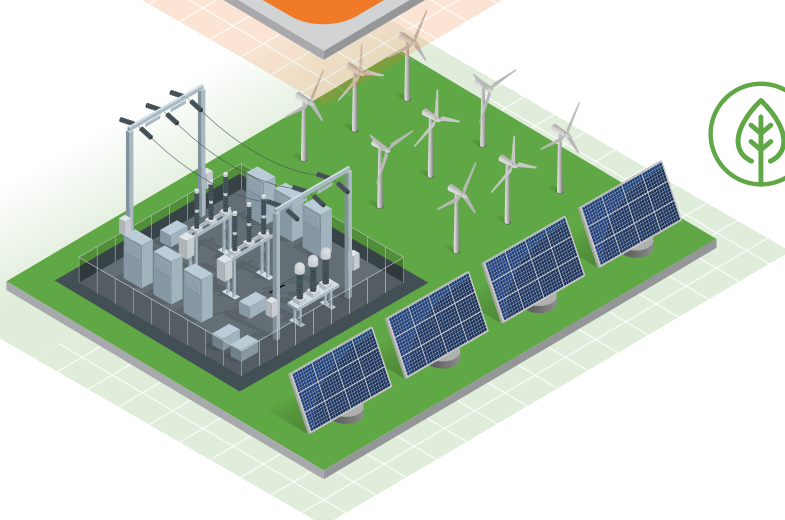
### Eliminate Refrigerant Emissions

- Net Zero Global Warming Potential (GWP)
- Zero Ozone Depletion Potential (ODP)
- Free from trifluoroacetic acid (TFA)



### Optimize Energy Consumption

- Active energy monitoring
- Energy-efficient products and building design
- Heat recovery



### Harness Green Power

- Sustainable energy sources
- Utilize district energy



# THE SUSTAINABLE ICE RINK

A truly sustainable ice rink meets the needs of your business, the community and the environment, while ensuring ice quality and safety are never compromised. There is more than one way to create one, but if saving the planet is the ultimate goal, doing so with the least amount of impact on the environment is the only logical way. That means choosing a naturally-derived refrigerant with an ultra-low Global Warming Potential (GWP), using energy-efficient technology, and following the best environmental practices to reduce emissions and energy consumption.

## NET ZERO NATURALLY



### ELIMINATE REFRIGERANT EMISSIONS

Different refrigerants have different environmental impacts, which is why the refrigerant you choose matters. Reducing your facility's greenhouse gas emissions starts with choosing a natural refrigerant like CO<sub>2</sub> or Ammonia, with a GWP equal to or less than one, and zero Ozone Depletion Potential (ODP). These refrigerants are also free from trifluoroacetic acid (TFA), a forever chemical that is harmful to humans and the environment, and that is linked to synthetic refrigerants.



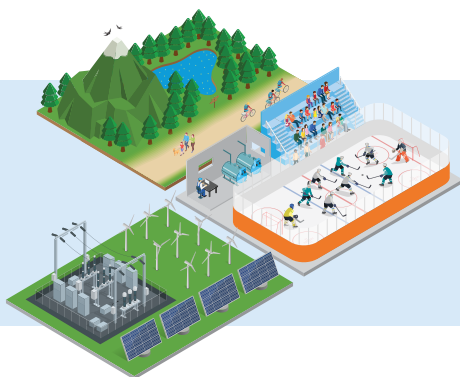
### OPTIMIZE ENERGY CONSUMPTION

Making sure your facility is energy efficient reduces your environmental footprint, and improves your bottom line. Whether that means installing LED lighting, using smart technology to monitor energy use in real time, or tapping into waste heat—an often-overlooked renewable resource and a byproduct of every refrigeration system—there are plenty of tools and strategies to help reduce your facility's energy consumption, that will also lower your operating costs.



### HARNESS GREEN POWER

Because buildings generate significant greenhouse gas emissions, using green energy sources like solar to help power your rink or arena can have a significant impact. So can the use of district energy, or low-carbon thermal energy networks, which consist of a heating and cooling centre and a thermal network of pipes connected to a group of buildings in order to deliver thermal energy to an entire community or neighbourhood.



## WHAT DOES SUSTAINABILITY MEAN TO YOU?

At CIMCO, our goal is to help our customers on their pathway to net zero in the most efficient way possible. Contact us today to discuss sustainable options to create your ideal ice.

Contact us today for a risk-free consultation.

**1-866-572-2395**

**CIMCOREFRIGERATION.COM**

