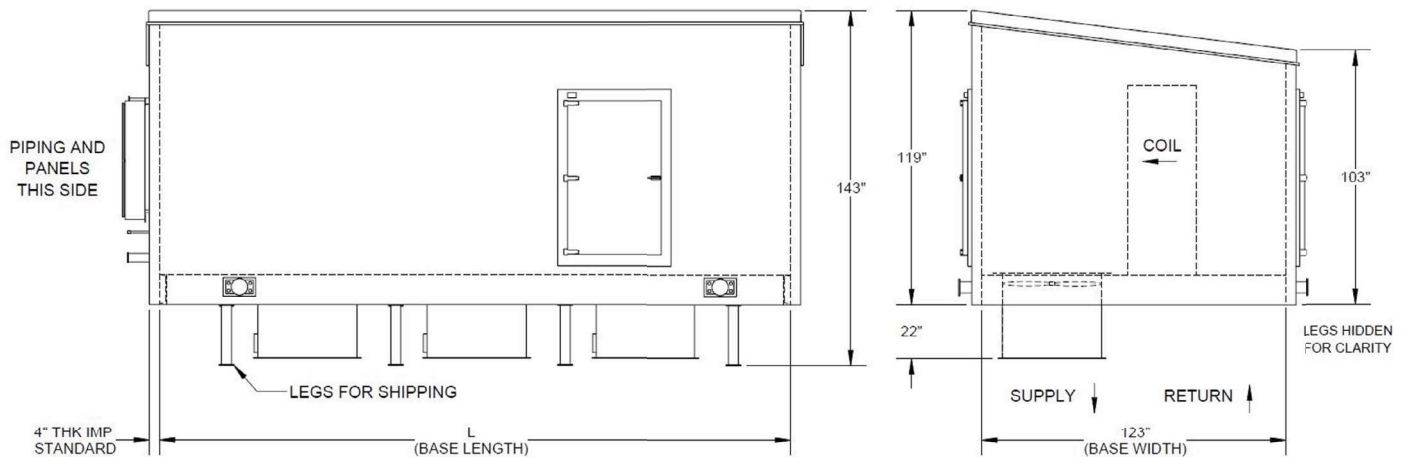


## PENTHOUSE EVAPORATOR: SPECIFICATIONS



1. Height and width constant across all models. Length varies between three enclosure sizes.
2. 3 fan unit pictured, 4 and 5 fans required as size increases. Variable fan spacing available.

Model No.	Refrigerant & Feed	Evaporating Temperature (°F)	Nominal Capacity (TR)	L (in)	Weight (lbs)	# of Fans	
PH-NH3-DX-C-1-32.1	Ammonia Dx	24 (Coolers)	32.1	254	14400	3	
PH-NH3-DX-C-1-34.7			34.7	254	14400	3	
PH-NH3-DX-C-1-39.9			39.9	254	15000	3	
PH-NH3-DX-C-2-45.5			45.5	322	17200	4	
PH-NH3-DX-C-3-47.8			47.8	391	19800	5	
PH-NH3-DX-C-3-50.8			50.8	391	20100	5	
PH-NH3-DX-C-3-52.1			52.1	391	20100	5	
PH-NH3-DX-C-3-65		65	391	21900	5		
PH-NH3-DX-F-1-27.8		-20 (Freezers)	27.8	254	13900	3	
PH-NH3-DX-F-1-34.7			34.7	254	14200	3	
PH-NH3-DX-F-1-41.5			41.5	254	14800	3	
PH-NH3-DX-F-3-52			52	391	20200	5	
PH-NH3-DX-F-3-62.3			62.3	391	21000	5	
PH-NH3-RL-C-1-32.1			Ammonia Recirculated	24 (Coolers)	32.1	254	13100
PH-NH3-RL-C-1-34.7	34.7				254	13500	3
PH-NH3-RL-C-1-39.9	39.9	254			13900	3	
PH-NH3-RL-C-2-45.5	45.5	322			16600	4	
PH-NH3-RL-C-2-47.8	47.8	322			16600	4	
PH-NH3-RL-C-2-50.8	50.8	322			16600	4	
PH-NH3-RL-C-2-52.1	52.1	322			16600	4	
PH-NH3-RL-C-2-65	65	322		17900	4		
PH-NH3-RL-F-1-27.8	-20 (Freezers)	27.8		254	12800	3	
PH-NH3-RL-F-1-34.7		34.7		254	13200	3	
PH-NH3-RL-F-1-41.5		41.5		254	13600	3	
PH-NH3-RL-F-2-52		52		322	16300	4	
PH-NH3-RL-F-2-62.3		62.3		322	16800	4	

Consult factory for CO<sub>2</sub> selection or custom ammonia applications.