

THE ENVIROFLEX® ESE201A-W-2 PORTABLE SMOKE EXTRACTOR

OWNER'S MANUAL

In Canada:

**Enviroflex® International Inc.
17 Brownridge Road
Unit 8
Halton Hills, Ontario
L7G 0C6**

**Phone: (905) 636-1177 Fax: (905) 636-1178
Internet Address: www.enviroflex.com
E Mail Address: info@enviroflex.com**

In USA

**Enviroflex® International Inc.
1051 Clinton St.
Buffalo, NY
14206-2823**

**Phone: (716) 883-2319
Fax: (716) 883-2139
Internet Address: www.enviroflex.com
E Mail Address: info@enviroflex.com**

INTRODUCTION

MAJOR COMPONENTS

Cabinet

The cabinet is fabricated out of satin coat mild steel and is painted via powder coating. The Enviroflex® name etc. is silk screened over the powder-coated paint.

The ESE201A-W-2 Portable Smoke Extractor unit uses a high efficient washable filter. The operating life expectancy of the washable filter depends on the type of smoke being removed, the severity of the smoke, duty cycle and whether the precoat is being used after each cleaning. It is extremely difficult to pinpoint how many pounds of consumable wire or electrode that can be deposited before the filter has to be cleaned. This is extremely difficult to estimate, as there are too many variables.

To clean the high efficient filter:

Please note the suction deteriorates as the filter loads up with contaminant. This deterioration of suction is the operator's indication when it is time to clean the filter.

- (1) Turn off the Smoke Extractor and pull out the electrical plug from the wall receptacle.
- (2) Unfasten the (2) latches located at the front of the machine. Remove the spark trap.
- (3) Pull out the EF200A washable filter, which can be blown out using a low-pressure air nozzle. You should use at least 60 to 80 PSI air pressure. You take the washable filter and turn it upside down and blow it from the outside only covering the entire media area. This should be repeated several times. You utilize the gasket on the front of the filter to eliminate blowing the contaminant all over the shop.
- (4) Place the clean filter back into the cabinet making sure the outer gasket comes in contact with the cabinet rim.
- (5) Before placing the spark trap on the unit you should shake the spark trap to remove any heavy particulate that has been caught inside behind the impinger plate.
- (6) Reinstall the spark trap in the cover and place the spark trap over the front of the cabinet making sure that the cover is seated correctly on all edges of the cabinet. Tighten the (2) latch catches.

- (7) Plug the machine back into the wall receptacle and turn the unit on. You then take a cup of precoat and feed it gradually into the end of the 15 ft. hose such that the precoat enters the hose in a fine mist. Do not let the precoat go in all at once as it will enter the filter in a lump form whereas it should enter the filter in a fine mist thus precoating the entire surface of the filter. Please note the filter can also be cleaned with a pressure washer as the filter is moisture resistant. We do not recommend this process unless absolutely necessary (e.g. oil mist) as the filter has to be left overnight to dry. If it was wet and then precoated the precoat would stick to the wet areas and have a lumping effect.

Charcoal Filters

If you have purchased the (2) optional charcoal filters it is a very easy installation. To install them you have to remove the spark trap then remove the EF200A filters. Install the 2 charcoal modules by butting them up against the motor hole plates at back of the filter plate. Please note it is vital that the flat portion of the charcoal cassette is facing the filters. Otherwise the air does not get a chance to expand before entering the motor and would only utilize a small portion of the charcoal the size of the motor inlet hole. Re-install the EF200A filter. Install the filter plate and the spark trap.

The charcoal will have to be replaced when odors can be detected coming out of the louvers on the 2 sides of the unit.

Electrical Service

The (2) electric motors are equipped with replaceable brushes. Once the brushes become worn the motor will automatically stop, thus eliminating any potential damage to the commutator. To replace the brushes be sure that the power has been turned off and the power cord has been removed from the wall outlet. Unscrew the four screws located at the rear of the cabinet to allow access to the motors. Remove the protective fan cap by lifting the metal clips, which are located on the sides of the cap. Remove the hold down screw, which secures the brush in place, and pull off the bayonet connector from the brush. Remove the old brush from the motor and install the new brush by reversing the above procedure. Replace the cap and screw the motor housing plate back onto the back of the cabinet. The ESE201A-W unit is now ready to operate.

If at any time you are unsure of any procedure, please do not hesitate to contact your nearest distributor.

Replacing Motor

If at any time you have to replace a motor please follow the following procedure.

- 1) Remove the (4) screws on the cooling air intake plate at the back of the machine. Remove the motor intake plate.
- 2) Remove four Phillips screws from the motor plate.
- 3) Unscrew the switch on the top of the machine and remove taking special precaution that the switch remains intact.
- 4) Remove the motor plate with the (2) motors on it - Remove the defective motor and install the new motor making sure there is a motor gasket between the motor and motor plate. You can then screw the new motor in.
- 5) Take the bottom motor wire of both motors and join them together. You then connect these wires to the white nylon terminal connector together.

- 6) The single wire on the terminal board goes to number 1 (#1) on the switch. The wire on the bottom motor goes to number 2 (#2) on the switch and the top motor wire goes to number 3 (#3) on the switch.

The white wire on the power cord goes to the wire on the terminal board that goes to #2 on the switch. The black wire on the power cord goes to the single wire on terminal that goes to the number 1 (#1) on the switch. You can now put the switch and plates back in place.

Preventative Maintenance

The brushes should be changed every 400 operating hours. This procedure should become part of a preventative maintenance program. This eliminates potential problems with the commutator.

Limited Warranty

Subject to the terms and conditions hereof, Enviroflex International Inc. warrants to its customer that all new and unused Equipment furnished by Enviroflex is free from defect in workmanship and material as of the time and place of delivery by Enviroflex. All products excluding the motors in the ESE Portable Smoke Extractor carry a (1) one-year warranty on materials and workmanship. The ESE motors are limited to a (3) three-month warranty. The Company's responsibility and obligation under the guarantee is limited to the exchange of any defective parts, which have been returned prepaid, to the factory and which prove to be defective through normal use. **ONLY PREPAID RETURNS WILL BE ACCEPTED.** Goods replaced under warranty will be returned prepaid. If in the company's judgement the replaced parts are not covered by the warranty, parts will be billed with a small labour charge and returned collect. No goods will be accepted without a written authorization from Enviroflex International Inc.

The conditions of the Guarantee are:

The unit must have been operated within its listed capacity.

Your Smoke Extractor is guaranteed for one (1) full year from the date of original purchase, against electrical and mechanical defects in material and workmanship. The warranty does not include the washable filter or brushes. The warranty does not cover damage caused by misuse, negligent handling, or use on voltages other than that stamped on the Smoke Extractor.

This warranty does not cover any personal injury, property damage, or any incidental or consequential damages of any kind, resulting from defect, malfunctions, misuse, or alteration of the product.

This guarantee is in lieu of any other warranty, either expressed or implied.

If warranty service is required, send the part(s) prepaid to your dealer or nearest authorized service center, with a proof of purchase. Ensure that sufficient packing material is used. If part(s) arrive damaged due to improper packaging, warranty will be void. Please enclose a note explaining the nature of your difficulty.

In Canada:

Enviroflex® International Inc.

17 Brownridge Road

Unit 8

Halton Hills, Ontario

L7G 0C6

Phone: (905) 636-1177 Fax: (905) 636-1178

Internet Address: www.enviroflex.com

E Mail Address: info@enviroflex.com

In USA

Enviroflex® International Inc.

1051 Clinton St.

Buffalo, NY

14206-2823

Phone: (716) 883-2319

Fax: (716) 883-2139

Internet Address: www.enviroflex.com

E Mail Address: info@enviroflex.com

ESE201A-W-2

Return Business Reply Card. Retain Warranty Card.

Owner's Name _____

Address _____

City _____ State/Province _____ Zip/Postal Code _____

Distributor's Name _____

Model No. _____ Serial No. _____ Date of Purchase _____

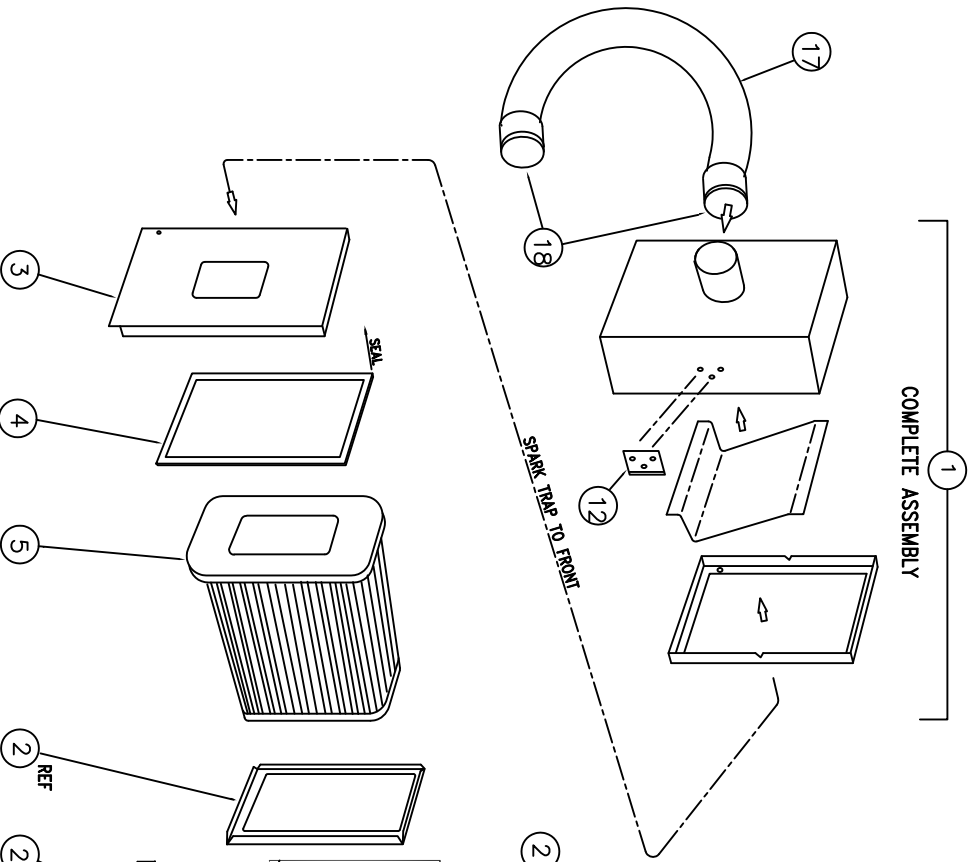
Reasons for Buying:

1) Improved Air Quality	<input type="checkbox"/>
2) Welding Smoke Removal	<input type="checkbox"/>
3) Other _____	

Where did you hear about this unit?

1) Newspaper or Magazine	<input type="checkbox"/>
2) Telephone Directory	<input type="checkbox"/>
3) Trade Directory	<input type="checkbox"/>
3) Enviroflex® Distributor	<input type="checkbox"/>
4) Friend	<input type="checkbox"/>
5) Another company	<input type="checkbox"/>
6) Trade Show	<input type="checkbox"/>
7) Other _____	

PORTABLE WELDING SMOKE EXTRACTOR ESE201A-W-2



ITEM	PART No.	DESCRIPTION	ITEM	PART No.	DESCRIPTION
1	6588	SPARK TRAP (COMPLETE)	11	6515-HD-L	LOCKING LATCHES
2	6403	CABINET COMPLETE (PAINTED) INCLUDES ALL INTERNAL WELDED ITEMS.	12	6515-HD-C	LOCKING CATCH
3	6404	IMPINGER PLATE	13	6523	UNIT CARRYING HANDLE
4	6566	RUBBER SEAL	14	6516	HEVCO CONNECTOR
5	EF200A	WASHABLE FILTER	15	6529	POWER CORD
6	6400	MOTOR MOUNTING PLATE	16	6515	ON/OFF SWITCH
7	102.1004	110V MOTOR	17	EH175-15	HOSE 15 ft - STANDARD LENGTH
7A	102.1004.001	220V SINGLE PHASE (OPTIONAL) BRUSH(2 PER MOTOR)	17	EH175-25	HOSE 25 ft - OPTIONAL
8	6401	END COVERS (MOTORS)	17	EH175-50	HOSE 50 ft - OPTIONAL
9	6402	AIR INTAKE COVERS	18	EHC-175	HOSE FITTING
10	6522	RUBBER FEET	19	6540	TERMINAL BOARD CONNECTOR
			20	6525A	GASKET (1/2")
			21	6517	RUBBER GASKET (1/8")
			22	102.1005	REAR MOTOR PLATE COMPLETE, INCLUDES (1) ITEM 8, (2) ITEM 9 RIVETTED TOGETHER, INCLUDES SOUND ABSORPTION PAD

