



SureWerx™



+ TOOLS EQUIPMENT 2021

FEATURING



STRONGARM®

surewerx.com

IMPACT WRENCHES

3/8" Drive Butterfly Impact Wrench

400120 | IW38BFLY



- Compact, lightweight design – with an overall length of just 5.4" and a total weight of only 1.1 lbs, this tool fits comfortably in the operator's hand
- Produces 80 ft-lbs of maximum torque and 100 ft-lbs of loosening torque
- Butterfly-style throttle provides instant, single-hand direction changes and speed control **A**
- Ideal for under dashboard, transmission, radiators and other engine work where space is limited
- Built-in swivel air inlet increases maneuverability and access to restricted work areas
- Impact and chemical-resistant housing protects against repeated drops and exposure to shop fluids
- Housing made from lightweight, durable aluminum
- For maximum performance we recommend 90 PSI air pressure

1/2" Drive Compact Impact Wrench

400268 | IW12MINI



- This compact and lightweight impact wrench delivers exceptional power and performance
- 500 ft-lbs of torque in reverse delivers optimum power and performance
- Weighing only 2.9 lbs, this lightweight impact wrench helps eliminate user fatigue
- Delivers the best power-to-weight ratio in the industry
- One-handed operation Forward–Reverse by either left or right-handed users **B**
- Jumbo hammer mechanism provides more powerful and balanced impact blows for reduced vibration
- Impact and chemical-resistant housing protects against repeated drops and exposure to shop fluids
- Housing made from lightweight, durable aluminum
- For maximum performance we recommend 90 PSI air pressure

1/2" Drive Impact Wrench - Heavy Duty

400260 | IW12HDA



- Ultra-compact design for confined workspaces
- Produces 650 ft-lbs of max torque in reverse
- Highly durable all-steel motor provides ultimate life and performance
- Twin hammer mechanism reduces vibration and increases durability
- Lightweight, balanced design weighs just 4.4 lbs
- Impact and chemical-resistant housing protects against repeated drops and exposure to shop fluids
- Housing made from lightweight, durable aluminum
- For maximum performance we recommend 90 PSI air pressure

IMPACT WRENCHES



AIR TOOLS

1/2" Drive Impact Wrench - Super Heavy Duty

400280 | IW12SHD

- Produces 1,100 ft-lbs of breakaway torque in reverse
- Twin hammer mechanism reduces vibration and increases durability
- Lightweight design weighs just 4.4 lbs
- Impact and chemical-resistant housing protects against repeated drops and exposure to shop fluids
- Housing made from lightweight, durable aluminum
- 4-position torque setting dial and feather trigger allows the user to select the desired speed and torque
- For maximum performance we recommend 90 PSI air pressure



1/2" Angled Impact Wrench

400262 | IW12AHD

- Designed for engine, under-vehicle work, and other confined spaces
- Delivers a max torque of 300 ft-lbs in reverse
- Full teasing trigger to deliver the right amount of speed for the job
- Single-handed Forward-Reverse operation for ease of use and operator comfort
- Over-moulded, composite and ergonomic handle to fit perfectly in hand
- Impact and chemical-resistant housing protects against repeated drops and exposure to shop fluids
- Housing made from lightweight, durable aluminum
- For maximum performance we recommend 90 PSI air pressure



SPECIFICATIONS

PROD. NO. MOD. NO.	400120 IW38BFLY	400268 IW12MINI	400260 IW12HDA	400280 IW12SHD	400262 IW12AHD
Square Drive	3/8"	1/2"	1/2"	1/2"	1/2"
Max. Torque - Forward	80 ft-lbs	450 ft-lbs	590 ft-lbs	715 ft-lbs	250 ft-lbs
Max. Torque - Reverse	100 ft-lbs	500 ft-lbs	650 ft-lbs	790 ft-lbs	300 ft-lbs
Free Speed	12,000 RPM	10,000 RPM	6,200 RPM	6,500 RPM	8,700 RPM
Overall Length	5.4"	4.33"	5.3"	9.1"	9.6"
Average Air Consumption	2.0 CFM	4.5 CFM	5.6 CFM	5.3 CFM	3.5 CFM
Min. Hose Size	3/8"	3/8"	3/8"	3/8"	3/8"
Air Inlet (NPT)	1/4"	1/4"	1/4"	1/4"	1/4"
Reversible	Yes	Yes	Yes	Yes	Yes
Sound Pressure	99.3 dBA	93.9 dBA	91.7 dBA	95.2 dBA	88.3 dBA
Vibration	6.74 m/s ²	10.0 m/s ²	5.7 m/s ²	8.80 m/s ²	8.46 m/s ²
Product Weight	1.1 lbs	2.9 lbs	4.4 lbs	4.4 lbs	2.58 lbs

IMPACT WRENCHES

3/4" Drive Impact Wrench - Heavy Duty

400360 | IW34HDA



- Ultra-compact design for working in confined spaces
- Produces 1,200 ft-lbs of max torque in reverse
- Highly durable all-steel motor provides ultimate life and performance
- Twin hammer mechanism reduces vibration and increases durability
- Lightweight, balanced design weighs just 6.3 lbs

- Convenient torque-adjustment dial adjusts torque to desired setting
- One-handed Forward-Reverse and torque adjustment dial for ease of use and operator comfort **A**
- Impact and chemical-resistant housing protects against repeated drops and exposure to shop fluids
- Housing made from lightweight, durable aluminum
- For maximum performance we recommend 90 PSI air pressure



1" Drive Impact Wrench - Super Heavy Duty

400449 | IW1SHD1



- Produces 2,200 ft-lbs of torque in reverse for the toughest applications
- Protective rubber boots provide lasting protection against drops **B**
- Durable design for handling the toughest jobs
- 3-speed adjustment and feather-touch trigger enables impressive control
- Built from a steel hammer case and metal housing, this impact wrench will withstand repeated drops and harsh weather conditions

1" Drive Impact Wrench SHD - 6" Extended Anvil

400450 | IW1SHD6



- Internally mounted throttle trigger for operator safety and convenience
- Rotatable side handle for added comfort
- Designed for the vehicle repair industry, heavy trucks, tire shops, and MRO
- For maximum performance we recommend 90-120 PSI air pressure

AIR HAMMER



AIR TOOLS




6-PC Air Hammer Kit - Super Heavy Duty

404136 | AH200SHD



- Feather trigger for precise speed control
- Ergonomic handle grip for optimal balance and control
- Tool-free, rotating exhaust-direction dial allows the user to direct the exhaust to either the front or handle of the tool
- Anti-vibration mechanism reduces user fatigue
- Ergonomic handle grip for optimal balance and control
- Swivel air inlet to prevent air hose from twisting during operation
- One-piece rubber over-moulded grip reduces shock and slippage
- Comes complete with 5 chisel bits, quick-change retainer and blow

PROD. NO. MOD. NO.	404136 AH200SHD
	
Blows Per Minute	2,000
Piston Diameter	3/4"
Piston Stroke	3.54"
Overall Length	9.14"
Average Air Consumption	3.7 CFM
Min. Hose Size	3/8"
Air Inlet (NPT)	1/4"
Sound Pressure (dBA)	95 dBA
Vibration	4.95 m/s ²
Product Weight	4.63 lbs

PROD. NO. MOD. NO.	400360 IW34HDA	400449 IW1SHD1	400450 IW1SHD6
			
Square Drive	3/4"	1"	1"
Max. Torque - Forward	1,000 ft-lbs	2,200 ft-lbs	2,200 ft-lbs
Max. Torque - Reverse	1,200 ft-lbs	2,200 ft-lbs	2,200 ft-lbs
Free Speed	4,800 RPM	4,800 RPM	4,800 RPM
Overall Length	6.2"	14"	20.1"
Average Air Consumption	6.2 CFM	9.6 CFM	9.6 CFM
Min. Hose Size	1/2"	1/2"	1/2"
Air Inlet (NPT)	3/8"	1/2"	1/2"
Reversible	Yes	Yes	Yes
Sound Pressure	91.8 dBA	94.9 dBA	94.9 dBA
Vibration	12.96 m/s ²	14.26 m/s ²	14.26 m/s ²
Product Weight	6.3 lbs	24.4 lbs	27.7 lbs

SPECIFICATIONS

JET

22-Ton Air/Hydraulic Truck Jack

030670 | 727A

- Designed for heavy-duty truck and trailer shop use, rail and bus work, and roadside service calls
- High-speed air motor design advances ram to load faster, for quick and more efficient operation
- Narrow chassis design fits easily between tandem wheels
- Fully welded hydraulic pump and cylinder construction provide increased strength and leak prevention
- Chrome-plated ram offers additional rust resistance
- Wiper seals protect hydraulic system from contaminants
- Two-piece 42.7" handle
- Overload and bypass safety valves prevent the jack from being used beyond its rated capacity and ram over extension
- Replaces 727 (030470)

*
GOOD



030670 | 727A

22-Ton Air/Hydraulic Truck Jack

030645 | 728D

- Designed for heavy-duty truck and trailer shop use, rail and bus work, and roadside service calls
- Faster more efficient air motor increases lifting speed by up to 20%
- Premium-grade seals and O-rings coupled with additional machining processes provide extended cylinder and ram life
- Narrow chassis design fits easily between tandem wheels
- Fully welded hydraulic pump and cylinder construction provide increased strength and leak prevention
- Chrome-plated ram offers additional rust resistance
- Wiper seals protect hydraulic system from contaminants
- Large, 8" diameter rubber wheels for easy maneuverability
- Overload and bypass safety valves prevent the jack from being used beyond its rated capacity and ram over extension
- Replaces 728C (030445)

**
BETTER



030645 | 728D

SPECIFICATIONS

PROD. NO. MOD. NO.	030670 727A	030645 728D
Capacity	22 T	22 T
Ram Lift	4.75"	4.75"
Low Height	8.75"	8.25"
High Height	17.63"	17.75"
Length	20.25"	20.25"
Front Width	6.94"	6.94"
Rear Width	12.81"	12.81"
Shipping Weight	77 lbs	99 lbs

Extensions included



JACK STANDS

10-Ton Jack Stand - Low Profile

- Used and sold in pairs for supporting trucks, trailers, and equipment
- Pin-type support column adjusts to a variety of height positions
- Height-adjustment pin is attached to the standby cable to prevent it being lost
- Large saddle with locating lugs to help support and centre the load
- Four-legged base made of heavy schedule 2" diameter pipe for added stability





032218 | 866A

22-Ton Safety Stand Pin Type - Sold in Pairs

- Used and sold in pairs for supporting trucks, trailers, and equipment in fleet garages, and in tire, brake, and underbody maintenance services
- Large 10" x 10" base for increased stability when working on uneven or soft surfaces such as asphalt
- Multiple pin holes allow adjustment to desired height
- Fully steel construction for maximum durability
- Large v-shaped saddle cradles axle or other under-truck components **A**
- Braided steel cable attaches to pin and stand to prevent loss
- Convenient carry handle for easy portability



032220 | 868

PROD. NO. MOD. NO.	032218 866A	032220 868
		
Capacity	10 T	22 T
Low Height	11.13"	11.8"
High Height	17.31"	19.7"
Base Dimensions	12.19" x 12.19"	10" x 10"
Saddle Dimensions	3" x 5"	2.3" x 3.5"
Shipping Weight (lbs)	58 lbs	78.5 lbs

SPECIFICATIONS

RATCHETING-STYLE JACK STANDS

JACKS AND STANDS

3-Ton Ratcheting-Style Jack Stands

032242 | 853B



6-Ton Ratcheting-Style Jack Stands

032244 | 856B



COMMON FEATURES

- Used and sold in pairs for supporting automotive vehicles after lifting
- Ductile iron support column with ratchet teeth provides multiple height positions
- Double-locks mechanism with both handle locks and mobility pin for increased safety **A**
- Notched saddles for use with unitized vehicles
- Welded foot pads resist sinking into soft ground or asphalt



12-Ton Ratcheting-Style Jack Stands

032248 | 872C



SPECIFICATIONS

PROD. NO. MOD. NO.	032242 853B	032244 856B	032248 872C
Capacity (tons)	3 T	6 T	12 T
Low Height	11"	15.5"	19.25"
High Height	16"	24"	28.31"
Base Dimensions	8.75" x 7.5"	12" x 9.75"	12" x 9.75"
Shipping Weight (lbs)	16 lbs	30 lbs	57 lbs

STABILIZING STANDS

STANDS

20-Ton Trailer Stabilizing Stand

032251 | 857

- Designed to stabilize and assist in supporting the front or rear end of loaded or unloaded tractor-less trailers
- 14" diameter base provides maximum stability
- Quick-adjust spin handle for easy turning
- Large 4.5"x 5" diamond-plate saddle to grip the load **B**
- 1.5" diameter, grade 5, heavy-duty screw and nut provide maximum strength and fine adjustment

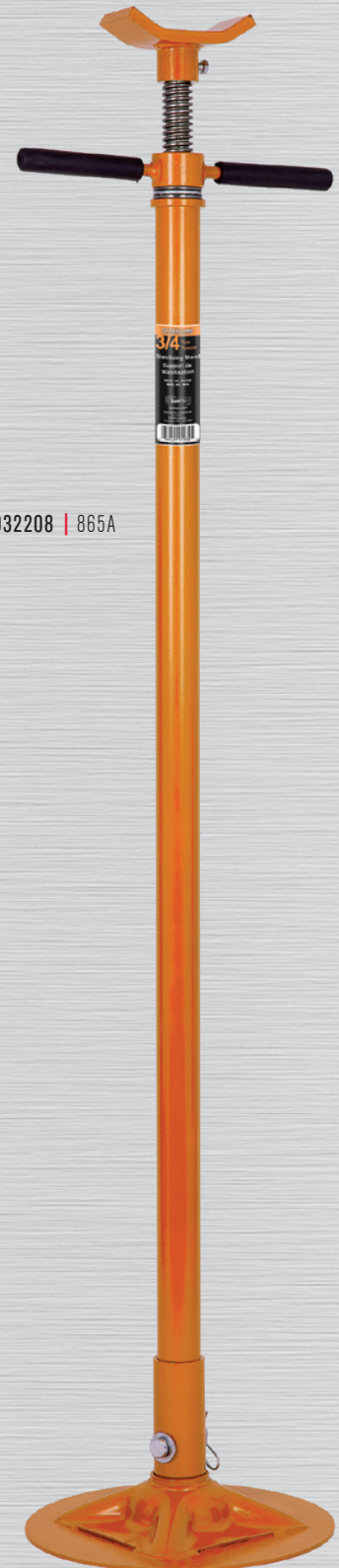


032251 | 857

3/4-Ton Stabilizing Stand - Single Post

032208 | 865A

- Designed to stabilize vehicle-system components such as exhausts and suspensions in under-hoist applications
- Made for supporting vehicle components – not vehicles
- Ideal for shock absorber replacement and exhaust system installations
- 12" Diameter base for stability and slim design for lightweight portability
- Contoured saddle supports most components **C**
- Acme-threaded screw for self-locking positioning



032208 | 865A

PROD. NO. MOD. NO.	032251 857	032208 865A
Capacity	20 T	3/4 T
Low Height	39"	54.5"
High Height	50.5"	79.5"
Base Diameter	14"	12"
Saddle Size	4.5"x 5"	3.2"x 3.2"
Shipping Weight	68 lbs	29.5 lbs

SPECIFICATIONS

STRONGARM

4-Way Folding Creeper Seat

355121 | JFZC-43450SHD



- Patented design quickly converts between flat creeper, high-back low seat, low-back low seat, and backless high seat with ease
- One-touch pin locks secure seat in any position and cannot be adjusted accidentally
- Six 3" professional-grade polypropylene swivel casters for smooth, easy rolling over cords, hoses, cracks, and shop floor debris
- Includes fold-down tool tray for convenience
- Upholstery resists most shop chemicals and cleans easily
- Gloss black powder-coat finish protects frame from corrosion
- Super heavy-duty 450 lb capacity for the most demanding applications
- The most versatile creeper seat on the market – if you can only buy one creeper, this is the one that does it all!
- Overall Size (L x W x H): 42.4 x 16.0 x 5.6"



40" Fixed-Head Creeper

355102 | JFHC-40400



- Heavy-duty creeper features roomy working space with extra-long 40" overall length and drop-shoulder design for increased mobility and comfort
- Low-profile, wide-frame shoulder cut-out design provides extra comfort and freedom of movement
- 355112 - Adjustable headrest with 3 stop positions up to 15, 30, and 45-degrees **A**
- Six 2.5" professional-grade polypropylene swivel casters for smooth, easy rolling over cords, hoses, cracks, and shop floor debris
- Patented caster bracket distributes weight across a larger area of the frame for maximum strength and durability **B**
- High-density 1.5" thick foam and double-padded headrest for maximum comfort
- Upholstery resists most shop chemicals and cleans easily
- Gloss black powder-coat finish protects frame from corrosion
- Heavy-duty 400 lb weight capacity (evenly distributed)
- Overall Size (L x W x H): 40.3 x 16.7 x 4.1"

40" Angle-Head Creeper

355112 | JAHC-40400



11

355132 | IRMC-42440



A blue JET brand adjustable stool with a chrome-plated metal frame and a circular base. The stool has a blue upholstered seat with the JET logo and a stylized 'Y' symbol. The frame is made of chrome-plated metal with four legs and a circular base. The legs have black caps at the bottom.

ROLLER SEATS & STOOLS

Deluxe Mechanic's Rolling Stool

355161 | JMS-350SHD



- Patented elevator tool tray rotates 360° and automatically adjusts to seat height to keep tools within reach at all times **A**
- Hydraulic piston adjusts seat from 17" – 21.5"
- Five 3" professional-grade polyurethane swivel casters provide maximum stability and smooth, easy rolling over cords, hoses, cracks, and shop floor debris
- High density 2.5" thick foam padding for maximum comfort
- Upholstery resists most shop chemicals and cleans easily
- Gloss black powder-coat finish protects frame from corrosion
- Super heavy-duty 350 lb weight capacity for maximum support and long service life
- Overall size (L x W x H): High: 15 x 15 x 21.5" / Low: 15 x 15 x 17"

Mechanic's Roller Seat with Drawer

355155 | JMS-641D



- Under-seat tool drawer with ball-bearing slides for convenient storage of commonly used tools **B**
- Includes convenient tool tray in base
- Four 2.5" professional-grade polyurethane swivel casters for smooth, easy rolling over cords, hoses, cracks, and shop floor debris
- Sturdy, square steel-tube frame to increase strength and durability
- High-density 2.38" thick foam for comfort
- Upholstery resists most shop chemicals and cleans easily
- Gloss black powder-coat finish protects frame from corrosion
- 250 lb weight capacity
- Overall size (L x W x H): 18.3 x 13.9 x 14.3"



Deluxe High/Low Roller Seat

355163 | JHLS-330SHD



- Unique quick-change shop seat provides high and low seating positions with back support
- Ideal for jobs that require long periods of work at various heights
- Low configuration allows user to slide legs under vehicle while seated for close-up work such as paint preparation, detailing, pin striping, etc. **C**
- One-touch pin lock secures seat in either position and cannot be adjusted accidentally
- Four 2.5" professional-grade polyurethane swivel casters for smooth, easy rolling over cords, hoses, cracks, and shop floor debris
- Includes tool tray for convenience
- Upholstery resists most shop chemicals and cleans easily
- Gloss black powder-coat finish protects frame from corrosion
- Super heavy-duty 330 lb weight capacity for maximum support and long service life
- Overall size (L x W x H): 22 x 15.4 x 31.2"
- Seat height: High: 19.2" / Low: 8.6"



ROLLER SEATS & STOOLS

Mechanic's Rolling Stool

355157 | JMS-642A

- Hydraulic piston adjusts seat from 15.6" – 20.4"
- Includes convenient tool organizer tray
- Five 2.5" professional-grade polyurethane swivel casters for smooth, easy rolling over cords, hoses, cracks, and shop floor debris
- High-density 1.8" (thick foam for maximum comfort
- Upholstery resists most shop chemicals and cleans easily
- Gloss black powder-coat finish protects frame from corrosion
- Heavy-duty 300 lb weight capacity
- Overall size (L x W x H): 14.5 x 14.5 x 20.4"



Mechanic's Roller Seat


355154 | JMS-641A

- Includes convenient tool organizer tray
- Four 2.5" professional-grade polyurethane swivel casters for smooth, easy rolling over cords, hoses, cracks, and shop floor debris
- Sturdy, square steel-tube frame to increase strength and durability
- High-density 1.8" thick foam for maximum comfort
- Upholstery resists most shop chemicals and cleans easily
- Gloss black powder-coat finish protects frame from corrosion
- Heavy-duty 330 lb weight capacity
- Overall size (L x W x H): 14.3 x 14.3 x 14.3"



3-Drawer Rolling Toolbox Seat

355160 | JTBS-3

- Tool cabinet and seat combination keeps a wide array of tools conveniently close at all times
- Can be custom loaded for specific jobs or keeps a full array of tools handy for whatever job that comes along
- Three ball-bearing-supported drawers with drawer liners and two fold-up trays with magnetic pads to hold small parts and tools
- Includes screwdriver rack/tool holder mounted to rear of seat 
- Four 2.5" professional-grade polyurethane swivel casters for smooth, easy rolling over cords, hoses, cracks, and shop floor debris
- High-density 2.38" thick foam for comfort
- Upholstery resists most shop chemicals and cleans easily
- Gloss black powder-coat finish
- Heavy-duty 350 lb weight capacity
- Overall size (L x W x H): 26.38 x 14.13 x 16"



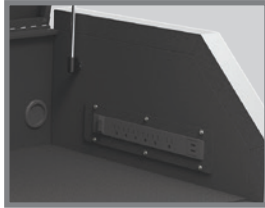


HD SERIES

The New Standard for Professional Tool Storage!

COMMON FEATURES

- Double-wall 18-gauge steel construction withstands the heaviest loads
- Riveted aluminum mouldings protect box corners from impact and increase rigidity and strength
- Extra-generous 21.5" depth provides increased storage capacity
- 120 lb-capacity ball bearing slides on all drawers for smooth, easy operation even when heavily loaded
- Soft-close drawer slides prevent slamming the drawers closed, keeping tools organized and ensuring drawers are completely closed before locking or moving toolbox
- Extruded aluminum drawer pulls ensure positive grip when opening heavily loaded drawers
- Recessed side handles for a clean, professional look
- Gas shocks support chest lid
- Lowered till height allows easy access to tools in top chest
- Magnetic tool wall helps keep small parts and tools organized **A**
- USB-powered LED lighting
- Durable oven-baked wrinkle finish resists fingerprints and most shop chemicals



41" x 21" HD Series 4-Drawer Mechanic's Chest

842664 | HDMC4104TW

- Power supply management includes 6 AC and 2 USB outlets with switch
- Overall size (L x W x H): 41 x 21.5 x 23"



Drawer Depth: 18.7"
Total Depth: 21.5"

TILL: 37.6 W x 7.5" H	
36.5 W x 2" H	
36.5 W x 2" H	
36.5 W x 2" H	
36.5 W x 2" H	

52" x 21" HD Series 6-Drawer Mechanic's Chest

842671 | HDMC5206TW

- Pull-out wood work surface with storage underneath
- Power supply management includes 6 AC and 2 USB outlets with switch
- Overall size (L x W x H): 51.8 x 21.5 x 23"



Drawer Depth: 18.7"
Total Depth: 21.5"

TILL: 48.3 W x 8.5" H	
12.8 W x 2" H	32.1 W x 2" H
12.8 W x 2" H	32.1 W x 2" H
12.8 W x 3.2" H	32.1 W x 3.2" H

41" x 21" HD Series 15-Drawer Toolbox Combo

842961 | HDCC-4115

- 15 drawers and generous till space maximizes storage options, including 5 full-width drawers for the longest tools
- Select drawers with 2 sets of slides to accommodate heavier loads – up to 240 lbs
- Power supply management includes 6 AC and 2 USB outlets with switch
- Heavy-duty automotive-style casters with pedal brake provide 2,500 lbs total capacity
- Chest and cabinet can be fastened together for added security when moving
- Overall size (L x W x H): 44.2 x 21.5 x 63.3"
- **SOLD AS SET.** Cabinet not available separately



TILL: 37.6 W x 7.5" H	
36.5 W x 2" H	
36.5 W x 2" H	
36.5 W x 2" H	
36.5 W x 2" H	
36.5 W x 4.4" H	
12.8 W x 2" H	21.4 W x 2" H
12.8 W x 2" H	21.4 W x 2" H
12.8 W x 4.2" H	21.4 W x 4.2" H
12.8 W x 4.2" H	21.4 W x 4.2" H
12.8 W x 9.7" H	21.4 W x 9.7" H

Drawer Depth: 18.7" *** Dual Slide Drawers**
Total Depth: 21.5"

TOOL CHESTS & CABINETS



61" x 23" HD Series 10-Drawer Mobile Work Bench

842629 | HDWB-6110



HD

SERIES

- Heavy-duty wood work surface provides ample space for any job. Roll it right up to the work and save steps going back to the bench
- Double-wall 19-gauge steel construction withstands the heaviest loads
- Massive pegboard tool wall with top shelf organizes the most commonly used tools and keeps them in easy reach **B**
- Can be folded behind toolbox when not in use
- One full-width drawer for the largest tools
- Includes cabinet door with shelf
- Extra-generous 23" depth provides increased storage capacity
- Select drawers with 2 sets of slides to accommodate heavier loads – up to 240 lbs
- Power supply management includes 6 AC and 2 USB outlets with switch
- Heavy-duty automotive-style casters with pedal brake
- Overall size (L x W x H): 61 x 23 x 37.6" (59.6" with raised peg board)



Drawer Depth: 20"
Total Depth: 23"

*** Dual Slide Drawers**

14 W x 20" H	56.5 W x 4" H	
	25 W x 2" H	12.5 W x 4" H
	25 W x 2" H	12.5 W x 2" H
	25 W x 2" H	12.5 W x 4" H
	25 W x 4" H	12.5 W x 4" H
	25 W x 9" H	12.5 W x 9" H

27" x 18" 9-Drawer Pro Series Mechanic's Chest

842555 | PMC4210

- The best value for tool storage in Canada!
- Double-wall steel construction
- 100 lb-capacity ball bearing slides on all drawers
- Extruded aluminum drawer pulls ensure positive grip when opening heavily loaded drawers
- Includes portable tool tray
- Overall size (L x W x H): 26 x 17.9 x 18.7"

Top Tray: 22.3 W x 2.5" H		
6.8 W x 2.1" H	6.8 W x 2.1" H	6.8 W x 2.1" H
6.8 W x 2.1" H	6.8 W x 2.1" H	6.8 W x 2.1" H
22.7 W x 2.1" H		
22.7 W x 2.1" H		
22.7 W x 2.8" H		

Drawer Depth: 16.4"
Total Depth: 17.9"



60" x 24" Jobsite Toolbox

842482 | JSB-6024

- Super heavy-duty 16-gauge steel body and lid for maximum security
- Dual recessed lock housings prevent use of bolt cutters or blades to cut locks
- Staked and welded piano hinge prevents hinge pin from being driven out
- Cord pass-through with rubber grommet allows secure overnight charging of power tools
- Overlapping lid prevents leaks and features full-width reinforcing bolster for added strength
- Finger groove in lid for easy opening, even with gloves
- Heavy-duty lid stays, preventing accidental closing
- 12-gauge 4-way skids allow forklift access from front, back, and both sides for increased transportation options
- Skids are pre-drilled to accept optional 6" x 2" heavy-duty casters
- High-visibility orange powder coat for superior corrosion resistance
- Overall size (W x D x H): 60 x 24.2 x 28.6"
- Load rating: 1000 lbs
- Capacity: 32,364.5 cu. in.
- Weight: 145.2 lbs





OUR TRUSTED FAMILY OF TOOL, EQUIPMENT & SAFETY BRANDS

JACKSON
SAFETY

sellstrom



K1
SERIES

duenorth

ranpro



STRONGARM



CANADA HEAD OFFICE

49 Schooner Street
Coquitlam, British Columbia
Canada V3K 0B3
TEL: 604-523-8665
FAX: 604-526-5381

WESTERN CANADA & TERRITORIES

TOLL FREE TEL: 1-800-472-7685
TOLL FREE FAX: 1-800-663-7742
SALES TEL: 604-523-7600
SALES FAX: 604-523-7693

EASTERN CANADA

TOLL FREE TEL: 1-800-387-3879
TOLL FREE TEL: 1-800-363-2885 (French)
TOLL FREE FAX: 1-800-267-3310
SALES TEL: 905-565-8661
SALES FAX: 905-565-7266