

U SERIES PORTABLE UTILITY FAN



U series utility fans - formerly known as FANTRAXX smoke ejectors - are ideal for many utility applications and have been designed to meet fire service needs.

The units are available in various configurations and sizes to satisfy almost any application. These fans produce high volumes of air in compact and efficient designs. Sizes range from 12" up to 24" blade diameters. Available with totally enclosed or explosion proof motors ranging in size from 1/3HP to 1/2HP. Entire fan assemblies are certified as shown.

All **U series utility fans** are finished in a tough powder coat finish with cadmium plated safety guards. All motors are ball bearing and require no maintenance. Voltages other than those listed (including 50HZ) are available. Consult factory. All units are equipped with 6 feet of cord with a plug (explosion proof units are minus plug). Available accessories include hanger bars and hooks, collar adaptors, flexible hoses, hose connectors and misting adaptor kits.

FEATURES

- Available in 12" to 18" sizes.
- Totally enclosed ball bearing motor and explosion proof models available.
- Powder coated housing.
- Fans come complete with 6 foot cord and plug (explosion proof motors come without a plug).

Heavy duty models also available. See next page.



SPECIFICATIONS

		MODEL	MOTOR	HP	RPM	VOLTAGE	FULL LOAD AMPERAGE (115)	CFM	WEIGHT (LBS)	FAN DIMENSIONS
BLADE DIAMETER	12"	U12-1	Totally enclosed	1/3	1725	115	3.8	1620	40	14 1/8" H X 14 1/8" W X 17" L
		U16-1	Totally enclosed	1/3	1725	115	3.8	3151	49	19 1/8" H X 19 1/8" W X 17" L
	16"	U16-4	Explosion proof	1/3	1725	115	6.8	3151	54	19 1/8" H X 19 1/8" W X 17" L
		U18-1	Totally enclosed	1/3	1725	115	3.8	3700	52	21 3/8" H X 21 3/8" W X 17" L
	18"	U18-4	Explosion proof	1/3	1725	115	6.8	3700	57	21 3/8" H X 21 3/8" W X 17" L

All Explosion Proof Fans have a single speed, dual voltage explosion proof motor that meets and conforms to all the standards that are listed below.

CLASS I, GROUP C *Atmospheres containing ethyl ether, ethylene, gases or vapors of equivalent hazard.*

CLASS I, GROUP D *Atmospheres such as acetone, ammonia, benzene, butane, cyclopropane, ethanol, gasoline, hexane, methane, natural gas, naphtha, propane, or gasses or vapors of equivalent hazard.*

CLASS II GROUP E *Atmospheres containing Aluminum, Magnesium and other metal dusts with similar characteristics.*

CLASS II GROUP F *Atmospheres containing carbonaceous dust, including carbon black, charcoal, coal, or coke dusts that have more than 8% total entrapped volatiles, or dusts that have been sensitized by other materials so that they present an explosion hazard.*

CLASS II GROUP G *Atmospheres containing combustible dusts not included in group E or F, including flour, grain, wood, plastic and chemicals.*

ACCESSORIES

- Hanger Bars/Hooks
- Flexible Hose
- Hose Connectors
- Collar Adaptors
- Utility Guards

For more information on accessories, see page E12.



U SERIES PORTABLE UTILITY FAN - HEAVY DUTY MODELS



U series utility fans - formerly known as FANTRAXX smoke ejectors - are ideal for many utility applications and have been designed to meet fire service needs. The units are available in various configurations and sizes to satisfy almost any application. These fans produce high volumes of air in compact and efficient designs. Sizes range from 12" up to 24" blade diameters. Available with totally enclosed or explosion proof motors ranging in size from 1/3HP to 1/2HP. Entire fan assemblies are certified as shown.

All **U series utility fans** are finished in a tough powder coat finish with cadmium plated safety guards. All motors are ball bearing and require no maintenance. Voltages other than those listed (including 50HZ) are available. Consult factory. All units are equipped with 6 feet of cord with a plug (explosion proof units are minus plug). Available accessories include hanger bars and hooks, collar adaptors, flexible hoses, hose connectors and misting adaptor kits.

FEATURES

- Available in 16" to 24" sizes.
- Totally enclosed ball bearing motor and explosion proof models available.
- Powder coated housing.
- Fans come complete with 6 foot cord and plug (explosion proof motors come without a plug).

For standard duty models please see previous page.

SPECIFICATIONS

	MODEL	MOTOR	HP	RPM	VOLTAGE	FULL LOAD AMPERAGE (115)	CFM	WEIGHT (LBS)	FAN DIMENSIONS
16"	U16-1HD	Totally enclosed	1/2	1725	115/230	8.8	3740	64	19 1/8" H X 19 1/8" W X 17" L
	U16-4HD	Explosion proof	1/2	1725	115/230	8.0	3740	83	
18"	U18-1HD	Totally enclosed	3/4	1725	115/230	11	5170	78	21 3/8" H X 21 3/8" W X 17" L
	U18-4HD	Explosion proof	3/4	1725	115/230	10.8	5170	96	
20"	U20-1HD	Totally enclosed	1	1725	115/230	13.4	6850	98	24 3/8" H X 24 5/14" W X 17" L
	U20-4HD	Explosion proof	1	1725	115/230	13.4	6850	118	
24"	U24-1HD	Totally enclosed	1 1/2	1725	115/230	15.2	9280	112	26 1/8" H X 26 1/8" W X 17" L
	U24-4HD	Explosion proof	1 1/2	1725	115/230	19	9280	134	

All Explosion Proof Fans have a single speed, dual voltage explosion proof motor that meets and conforms to all the standards that are listed below.

CLASS I, GROUP D *Atmospheres such as acetone, ammonia, benzene, butane, cyclopropane, ethanol, gasoline, hexane, methane, natural gas, naphtha, propane, or gasses or vapors of equivalent hazard.*

CLASS II GROUP F *Atmospheres containing carbonaceous dust, including carbon black, charcoal, coal, or coke dusts that have more than 8% total entrapped volatiles, or dusts that have been sensitized by other materials so that they present an explosion hazard.*

CLASS II GROUP G *Atmospheres containing combustible dusts not included in group E or F, including flour, grain, wood, plastic and chemicals.*

ACCESSORIES

- Hanger Bars/Hooks
- Flexible Hose
- Hose Connectors
- Collar Adaptors
- Utility Guards

For more information on accessories, see page E12.



PORTABLE UTILITY FAN & U SERIES SMOKE EJECTOR ACCESSORIES

HANGER BARS / HOOKS



Adjustable bar and hooks (sold separately) used to hang U Series utility fan from a doorway or opening (Minimum 31" / Maximum 45" wide).

MODEL	DESCRIPTION
SEH-3	DOOR HANGER BAR
SEH-HB	HANGER HOOKS (PAIR)

FLEXIBLE HOSE

Our Flexible Hose is constructed from a PVC fabric sewn around a spring wire helix. Temperature range is from -20° to 200°F. Flexible Hose is flame resistant and compressible to 1/5 extended length. Comes equipped with quick release buckle on one end and outlet ring on the other end.



8" & 12" models come complete with soft carrying case.

MODEL	DIAMETER	LENGTH	FAN SIZE
H8BC	8"	15'	U12
H12BC	12"	15'	U12
H16BC	16"	20'	U16
H18BC	18"	20'	U18
H20BC	20"	20'	U20
H24BC	24"	20'	U24

HOSE CONNECTORS

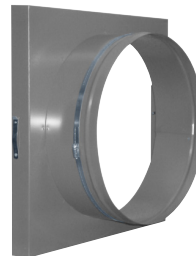
Hose Connectors are required when attaching two lengths of hose together. Two gear clamps are included.



MODEL	FOR HOSE DIAMETER
HK8	8"
HK12	12"
HK16	16"
HK18	18"
HK20	20"
HK24	24"

COLLAR ADAPTORS

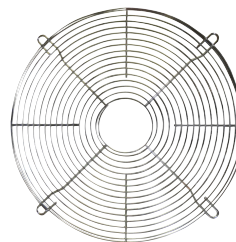
Collar Adaptors are required when using flexible hose. Easily attached to the inlet or discharge of a Smoke Ejector with spring clips (included).



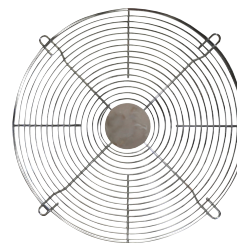
MODEL	HOSE SIZE	FAN SIZE	WEIGHT (LBS)
CA12-12	12"	U12	7
CA16	16"	U16	8
CA18	18"	U18	9
CA20	20"	U20	15
CA24	24"	U24	TBA

UTILITY GUARDS

Utility Guards have the centers cut out. To order with centre, do not include C in the model number.



2U121CLFI



2U121LFI

MODEL	SIZE
2U121CLF I	12"
2U161CLF I	16"
2U181CLF I	18"
2U202CLF I	20"
MC27GC	27"
MC30CG	30"