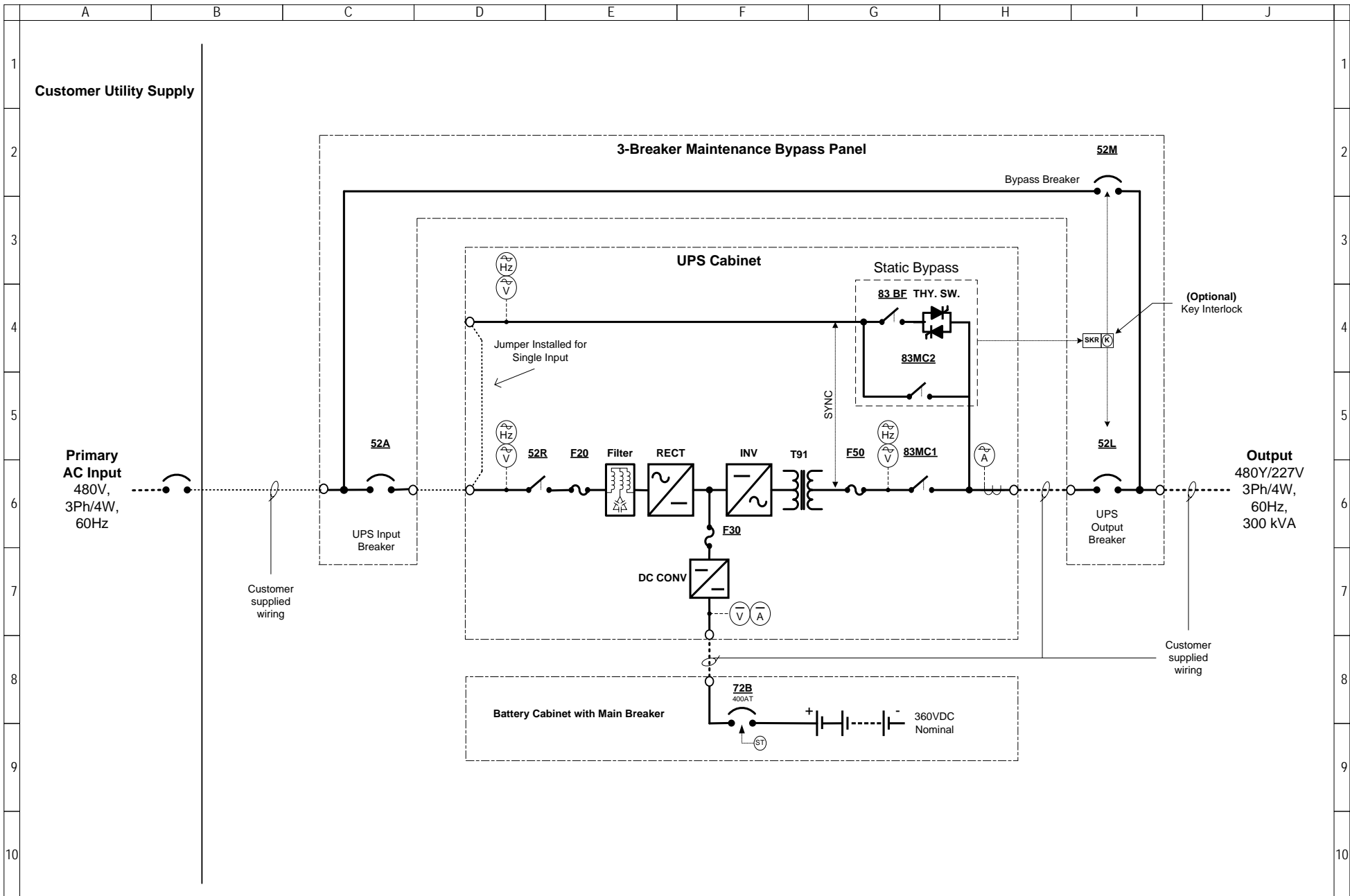
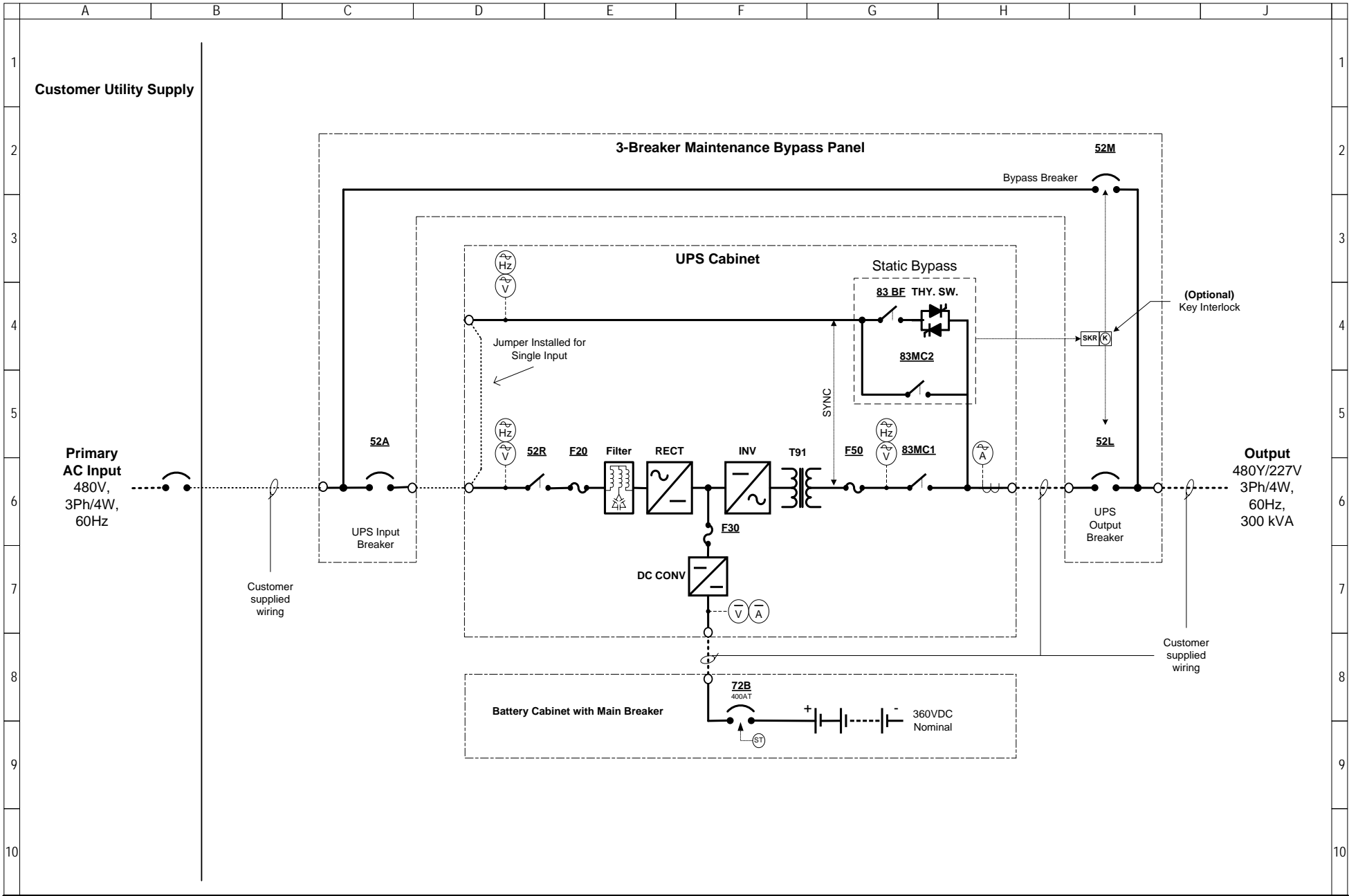


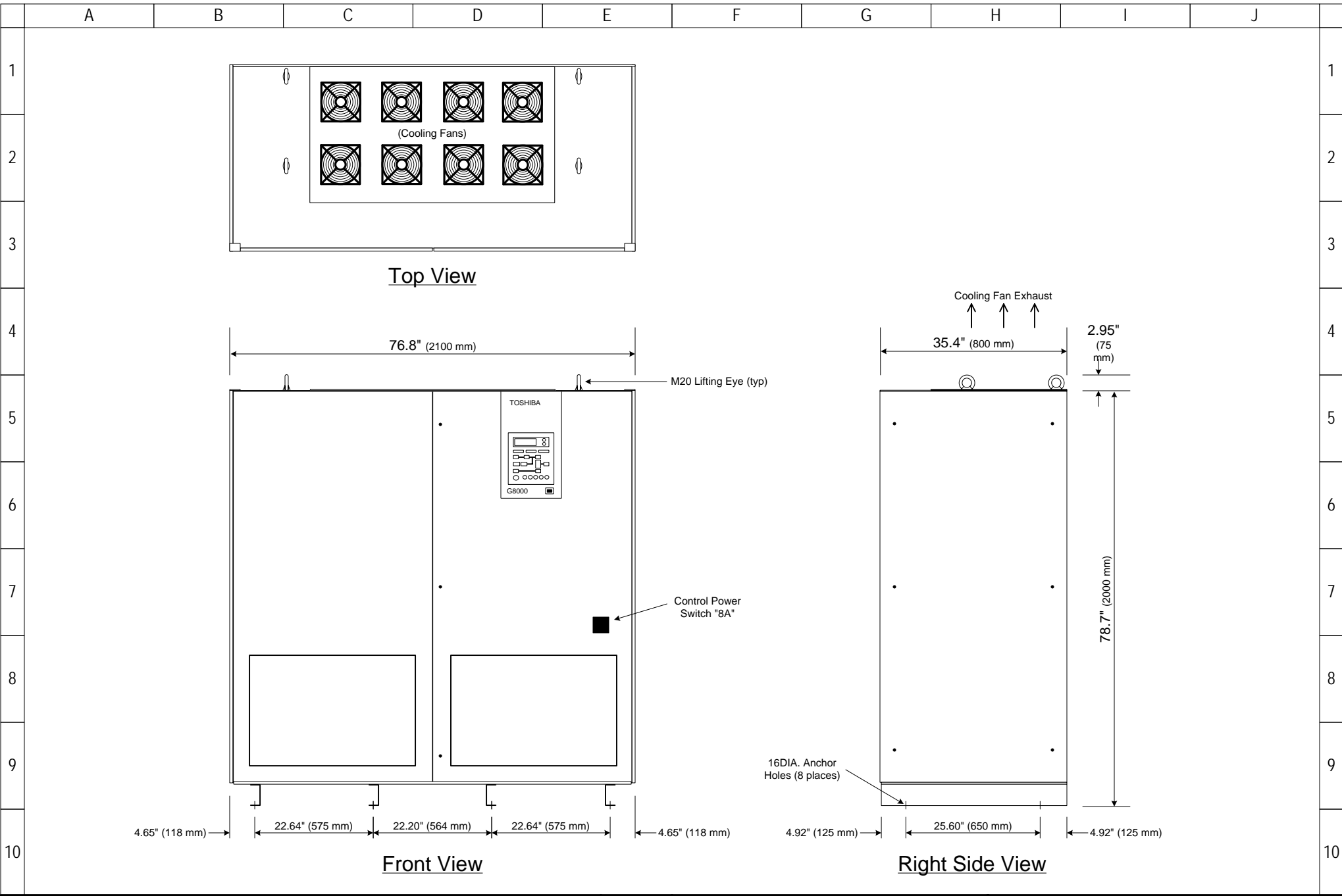
<p>NOTES</p> <p>1) This drawing is for illustration purposes only and is subject to change without notice. TIC is not responsible for any errors or omissions.</p> <p>2) Interconnections between battery cabinets are provided by others at installation.</p>	<p>Drawn by JE Date 02/07/06 Approved by JIS Date 02/07/06</p>	<p style="text-align: center;">TOSHIBA INTERNATIONAL CORPORATION Houston Texas, USA</p> <p style="text-align: center;">THIS MATERIAL IS THE EXCLUSIVE PROPERTY OF TOSHIBA INTERNATIONAL CORPORATION AND SHALL NOT BE REPRODUCED, USED, OR DISCLOSED TO OTHERS UNLESS PRIOR WRITTEN AUTHORIZATION IS OBTAINED.</p>	<p>TITLE</p> <p style="text-align: center;">One-Line Diagram 300 kVA G8000 Series UPS 480V Dual Feed, 480Y/277V Output</p> <hr/> <p>DRAWING NO. T80S3K30KK6XSN-SI</p> <p>REV. 2.1</p>
---	--	--	--



<p>NOTES</p> <p>1) This drawing is for illustration purposes only and is subject to change without notice. TIC is not responsible for any errors or omissions.</p>	<p>Drawn by JE Date 02/07/06</p> <p>Approved by JIS Date 02/07/06</p>	<p>TOSHIBA</p> <p>INTERNATIONAL CORPORATION Houston Texas, USA</p> <p>THIS MATERIAL IS THE EXCLUSIVE PROPERTY OF TOSHIBA INTERNATIONAL CORPORATION AND SHALL NOT BE REPRODUCED, USED, OR DISCLOSED TO OTHERS UNLESS PRIOR WRITTEN AUTHORIZATION IS OBTAINED.</p>	<p>TITLE</p> <p>One-Line Diagram 300 kVA G8000 Series UPS 480V Single Input, 480Y/277V Output, with External 3-Breaker Bypass Panel</p> <p>DRAWING NO. T80S3K30KX6NSN-E3-SI</p> <p>REV. 2.1</p>
---	---	---	---



<p>NOTES</p> <p>1) This drawing is for illustration purposes only and is subject to change without notice. TIC is not responsible for any errors or omissions.</p>	<p>Drawn by JE Date 02/07/06</p> <p>Approved by JIS Date 02/07/06</p>	<p>TOSHIBA</p> <p>INTERNATIONAL CORPORATION Houston Texas, USA</p> <p>THIS MATERIAL IS THE EXCLUSIVE PROPERTY OF TOSHIBA INTERNATIONAL CORPORATION AND SHALL NOT BE REPRODUCED, USED, OR DISCLOSED TO OTHERS UNLESS PRIOR WRITTEN AUTHORIZATION IS OBTAINED.</p>	<p>TITLE</p> <p>One-Line Diagram 300 kVA G8000 Series UPS 480V Single Input, 480Y/277V Output, with External 3-Breaker Bypass Panel</p> <p>DRAWING NO. T80S3K30KX6NSN-E3-SI</p> <p>REV. 2.1</p>
---	---	---	---



NOTES

- 1) This drawing is for illustration purposes only and is subject to change without notice. TIC is not responsible for any errors or omissions.
- 2) UPS enclosure type: NEMA 1 Free-standing.
- 3) Approximate overall weight: 4,400 Lbs. (2,000 kg)
- 4) Approximate FL heat loss: 61,680 Btu/Hr (18 kW)

Drwan by
EO
Date 05/20/04

Approved by
JIS
Date 05/20/04

TOSHIBA
INTERNATIONAL CORPORATION
Houston Texas, USA

THIS MATERIAL IS THE EXCLUSIVE PROPERTY OF
TOSHIBA INTERNATIONAL CORPORATION AND SHALL NOT
BE REPRODUCED, USED, OR DISCLOSED TO OTHERS
UNLESS PRIOR WRITTEN AUTHORIZATION IS OBTAINED.

TITLE Outline Diagram 300 kVA G8000 Series UPS, 480V Input and Output, Standard UPS Cabinet	
DRAWING NO. T80S3K-300KVA	REV. 1.0